

AIRPORT MASTER PLAN UPDATE

Smith Reynolds Airport

Winston-Salem, North Carolina

AIRPORT COMMISSION OF FORSYTH COUNTY

SMITH REYNOLDS AIRPORT



LOCATION MAP

PREPARED BY



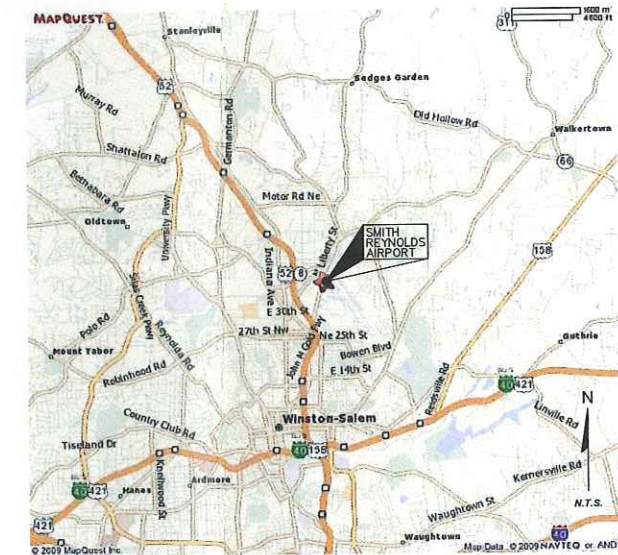
May 2012

INDEX OF DRAWINGS

TITLE	SHEET NO.
COVER SHEET	1
AIRPORT LAYOUT PLAN	2
TERMINAL AREA PLAN (SHEET 1 OF 2)	3
TERMINAL AREA PLAN (SHEET 2 OF 2)	4
AIRPORT AIRSPACE DRAWING RUNWAY 4-22 PLAN AND PROFILE	5
AIRPORT AIRSPACE DRAWING RUNWAY 15-33 PLAN AND PROFILE (SHEET 1 OF 3)	6
AIRPORT AIRSPACE DRAWING RUNWAY 15-33 PLAN AND PROFILE (SHEET 2 OF 3)	7
AIRPORT AIRSPACE DRAWING RUNWAY 15-33 PLAN AND PROFILE (SHEET 3 OF 3)	8
RUNWAY 4 APPROACH PROFILE AND PROTECTION ZONE	9
RUNWAY 22 APPROACH PROFILE AND PROTECTION ZONE	10
RUNWAY 15 APPROACH PROFILE AND PROTECTION ZONE	11
RUNWAY 33 APPROACH PROFILE AND PROTECTION ZONE	12
LAND USE DRAWING	13
AIRPORT PROPERTY MAP	14
RUNWAY 33 DEPARTURE SURFACES DRAWING	15
RUNWAY 15 DEPARTURE SURFACES DRAWING	16
RUNWAY 4-22 DEPARTURE SURFACES DRAWING	17

Airport Commission

Thomas F. McKim - Chairman
 Perry G. Hudspeth - Vice Chairman
 Scott G. Piper - Secretary/Treasurer
 William H. Whiteheart - Commissioner
 Glenn Cobb - Commissioner



VICINITY MAP

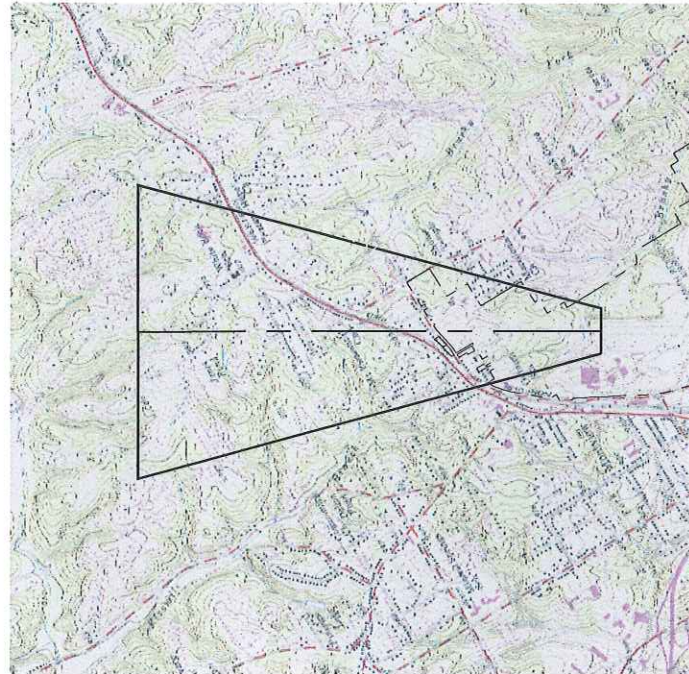
Smith Reynolds Airport

3801 North Liberty Street, Suite 204
 Winston-Salem, NC 27105
www.smithreynolds.org
 Phone: 336-767-6361
 Fax: 336-767-8556
 Mark Davidson - Airport Director
 Bev Shelton - Administrative Coordinator
 David Shoaf - Airport Maint. Supervisor

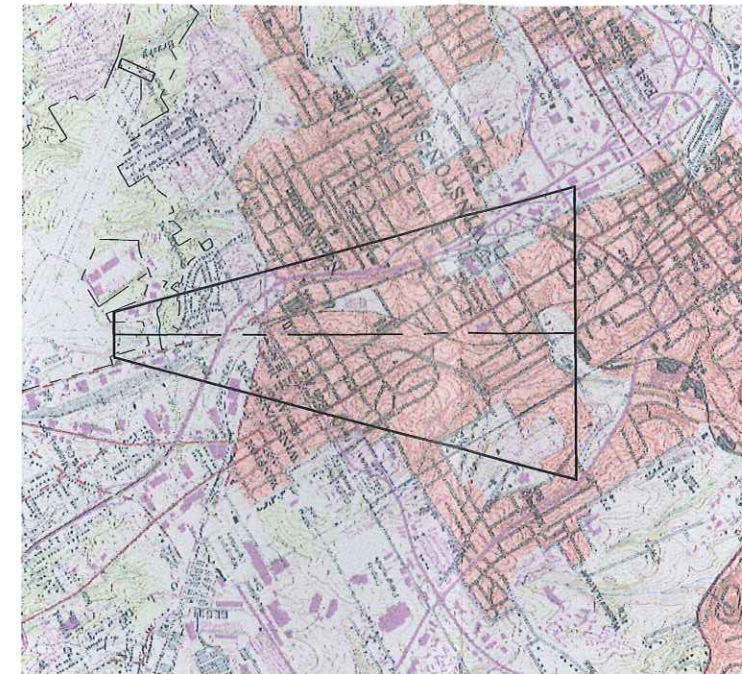
VARIATION 8° E W
DECEMBER 14, 2011

8" TRUE
MAGNETIC

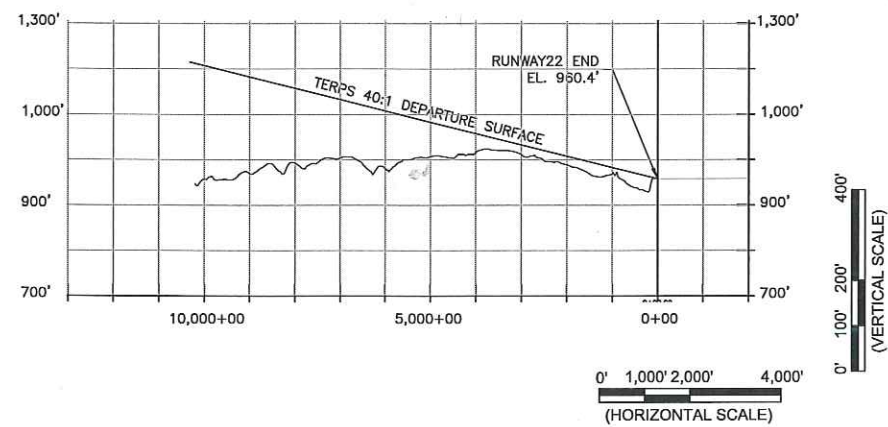
RATE OF CHANGE
0" 3" W/YEAR
SOURCE: NATIONAL
GEOGRAPHICAL DATA
CENTER
DECEMBER 14, 2011



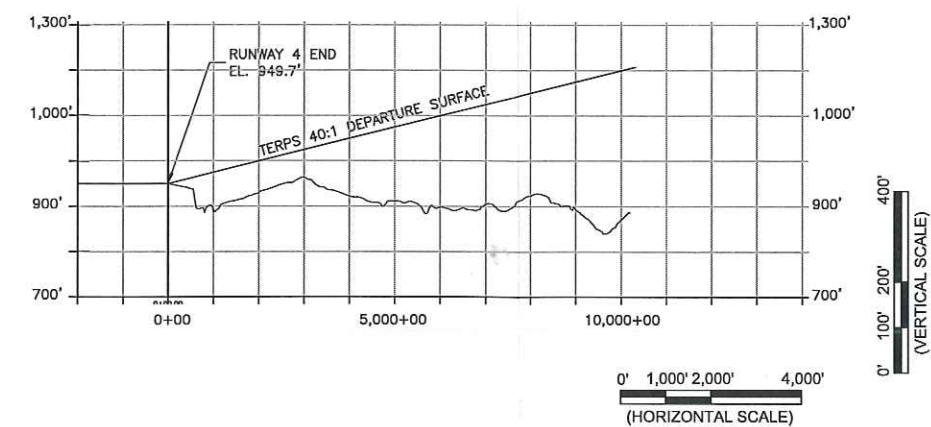
PLAN VIEW RUNWAY 4 DEPARTURE SURFACES



PLAN VIEW RUNWAY 22 DEPARTURE SURFACES



PROFILE VIEW RUNWAY 4 DEPARTURE SURFACES



PROFILE VIEW RUNWAY 22 DEPARTURE SURFACES

Plotted By: wlfers
 P:\2009\2009130.01\17_Updates\ALP-Drawings\17_SRA\ALP.dwg May 15, 2012 - 10:16am

REVISIONS	
DATE	DESCRIPTION

SPONSOR

AIRPORT COMMISSION OF FORSYTH COUNTY

SMITH REYNOLDS AIRPORT

PROJECT

AIRPORT MASTER PLAN UPDATE
SMITH REYNOLDS AIRPORT
WINSTON SALEM, NORTH CAROLINA

SHEET TITLE

RUNWAY 4-22 DEPARTURE SURFACES DRAWING

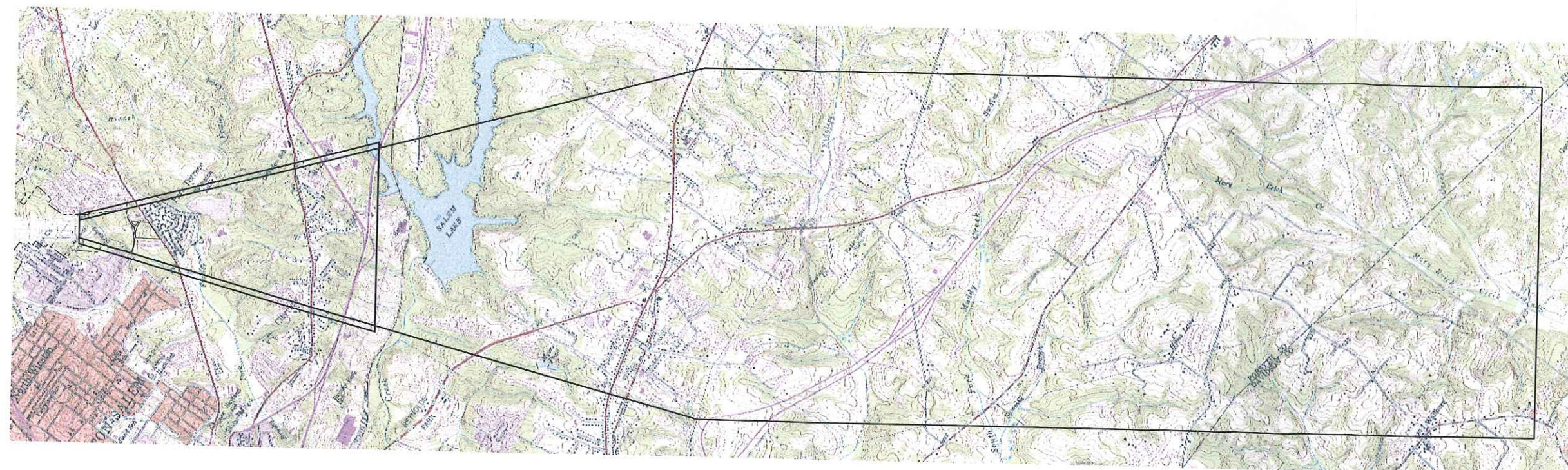
PREPARED BY:

JOB NO.: 2009.130.01
 DRAWN: WLJ
 DESIGN: MAD
 CHECKED: MAD
 DATE: MAY 2012
 SCALE:
 SHEET **17** OF **17**

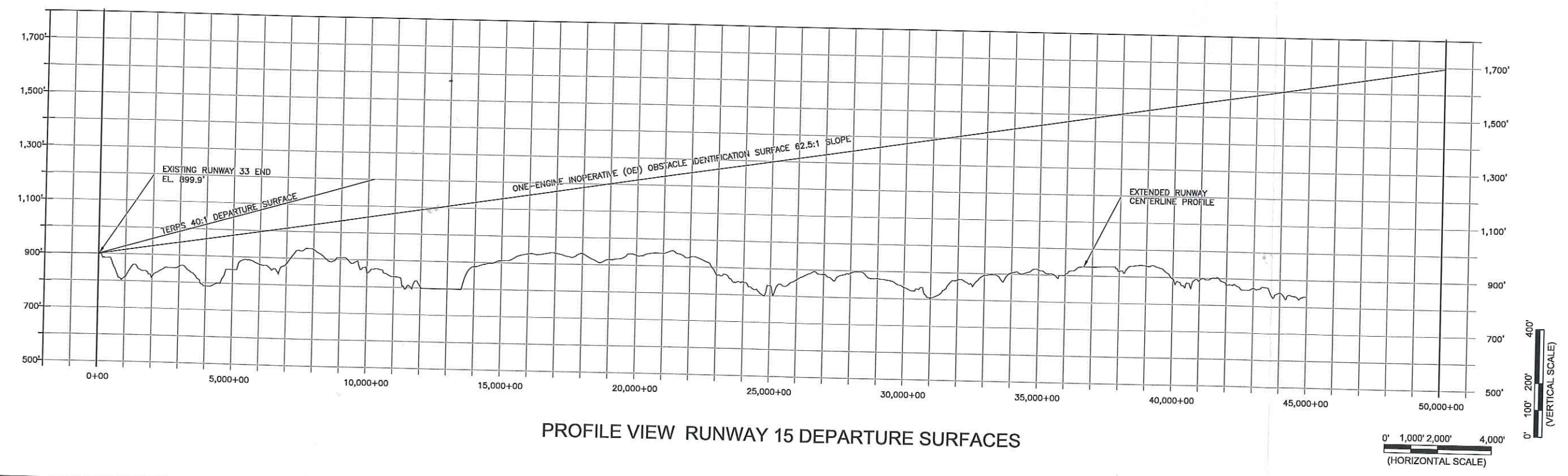
8" TRUE
MAGNETIC

VARIATION 8° 6' W
DECEMBER 14, 2011

RATE OF CHANGE
0° 3' W/YEAR
SOURCE: NATIONAL
GEOGRAPHICAL DATA
CENTER
DECEMBER 14, 2011



PLAN VIEW RUNWAY 15 DEPARTURE SURFACES



PROFILE VIEW RUNWAY 15 DEPARTURE SURFACES

Plotted By: wjones
 P:\2009\2009.130.01 M...
 m Update\ALP-Drawings\15_16_SRA_ALP.dwg May15,2012 - 10:10am

REVISIONS	
DATE	DESCRIPTION

SPONSOR

AIRPORT COMMISSION OF FORSYTH COUNTY

SMITH REYNOLDS AIRPORT





PROJECT

**AIRPORT MASTER PLAN UPDATE
SMITH REYNOLDS AIRPORT
WINSTON SALEM, NORTH CAROLINA**

SHEET TITLE

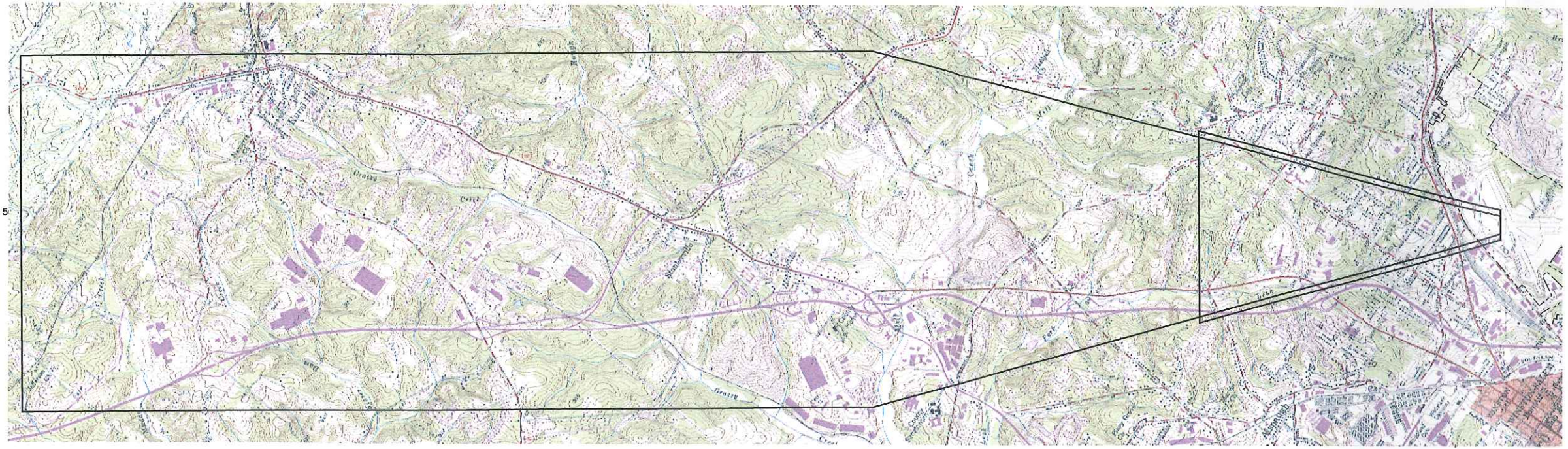
**RUNWAY 15 DEPARTURE
SURFACES DRAWING**

PREPARED BY:

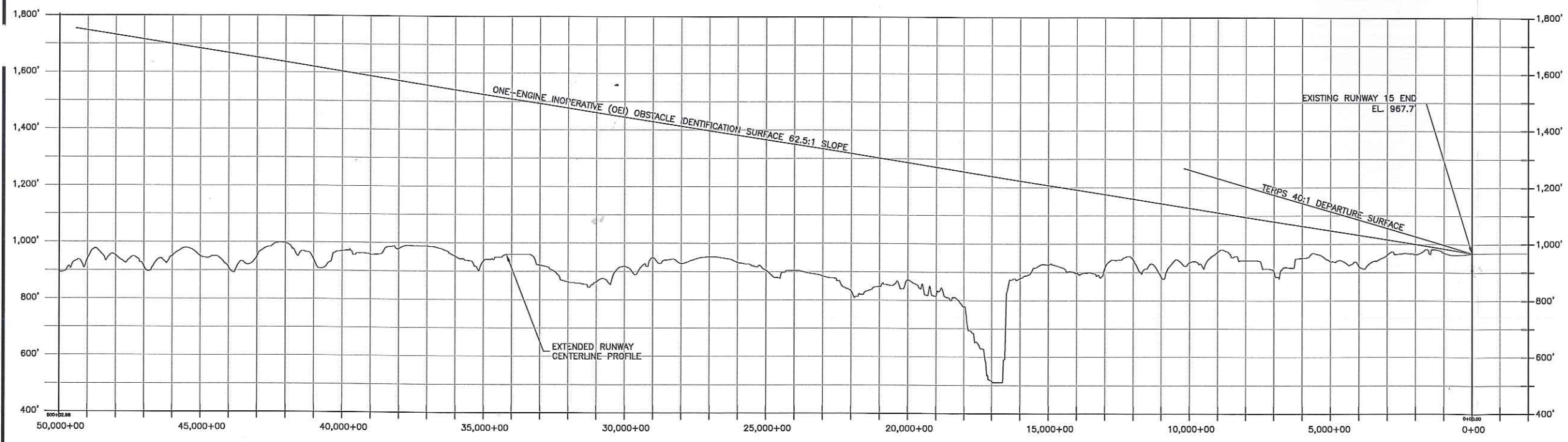



JOB NO.: 2009.130.01
 DRAWN: WLJ
 DESIGN: MAD
 CHECKED: MAD
 DATE: MAY 2012
 SCALE:

8" TRUE
 MAGNETIC
 VARIATION 8° 3' W
 DECEMBER 14, 2011
 RATE OF CHANGE
 0° 3' W/YEAR
 SOURCE: NATIONAL
 GEOPHYSICAL DATA
 CENTER
 DECEMBER 14, 2011



PLAN VIEW RUNWAY 33 DEPARTURE SURFACES



PROFILE VIEW RUNWAY 33 DEPARTURE SURFACES

0' 1,000' 2,000' 4,000'
 (HORIZONTAL SCALE)

0' 100' 200' 400'
 (VERTICAL SCALE)

- NOTES:
1. ALL ELEVATIONS SHOWN ARE ABOVE MEAN SEA LEVEL (AMSL).
 2. QUAD MAPS SOURCE: HIGH POINT WEST, N.C.(1987), KERNESVILLE, N.C.(1994), KING, N.C.(1996), MIDWAY, N.C.(1994), RURAL HALL, N.C.(1994), WALKERTOWN, N.C.(1986), WINSTON-SALEM, N.C.(1994)

Plotted By: wjones
 P:\2009\2009_130_01
 Update\Map-Drawings\15_16_SRA_ALP.dwg May 15, 2012 - 10:03am

REVISIONS	
DATE	DESCRIPTION

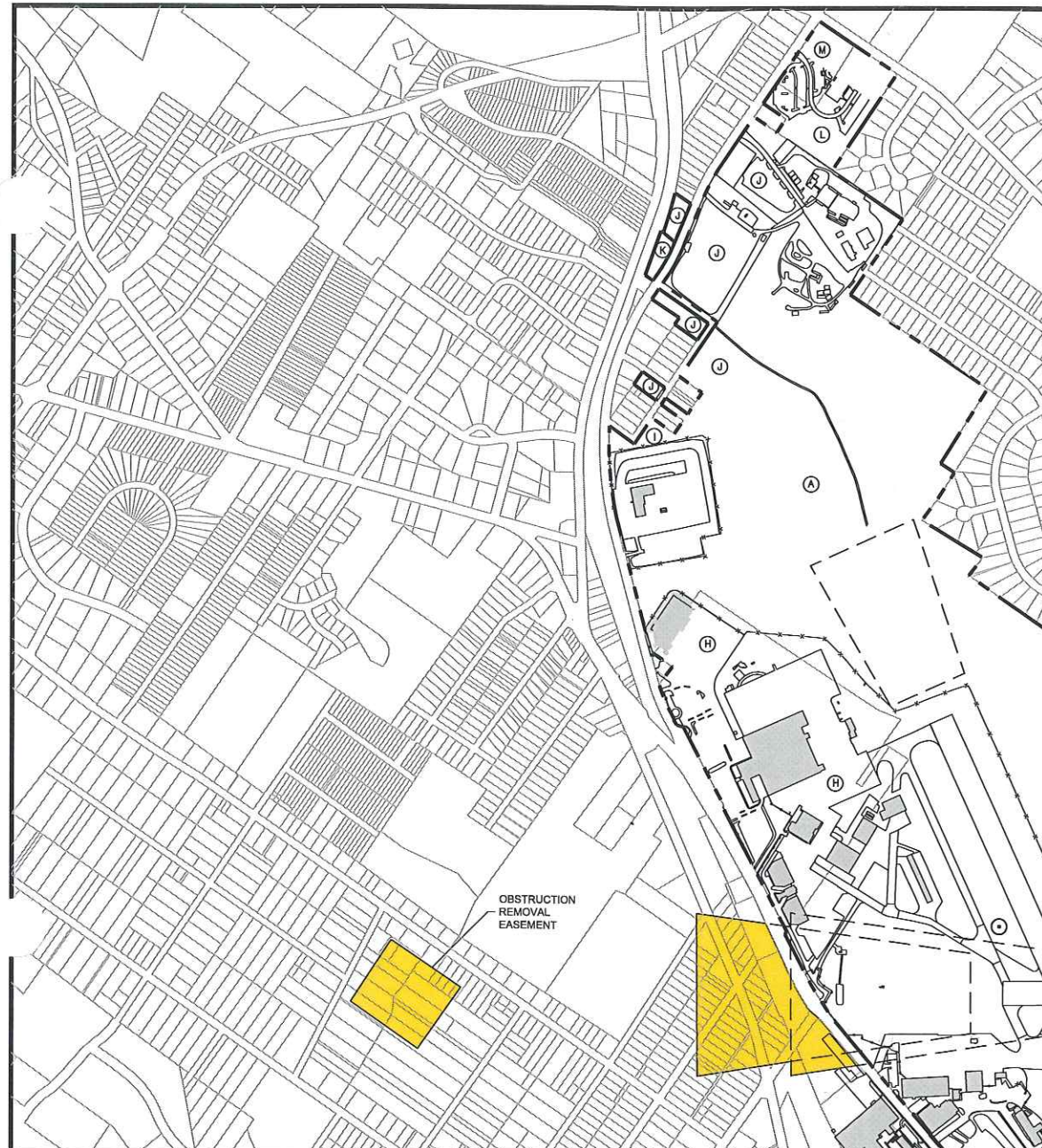
SPONSOR
AIRPORT COMMISSION OF FORSYTH COUNTY
SMITH REYNOLDS AIRPORT

PROJECT
AIRPORT MASTER PLAN UPDATE
SMITH REYNOLDS AIRPORT
WINSTON SALEM, NORTH CAROLINA

SHEET TITLE
RUNWAY 33 DEPARTURE
SURFACES DRAWING

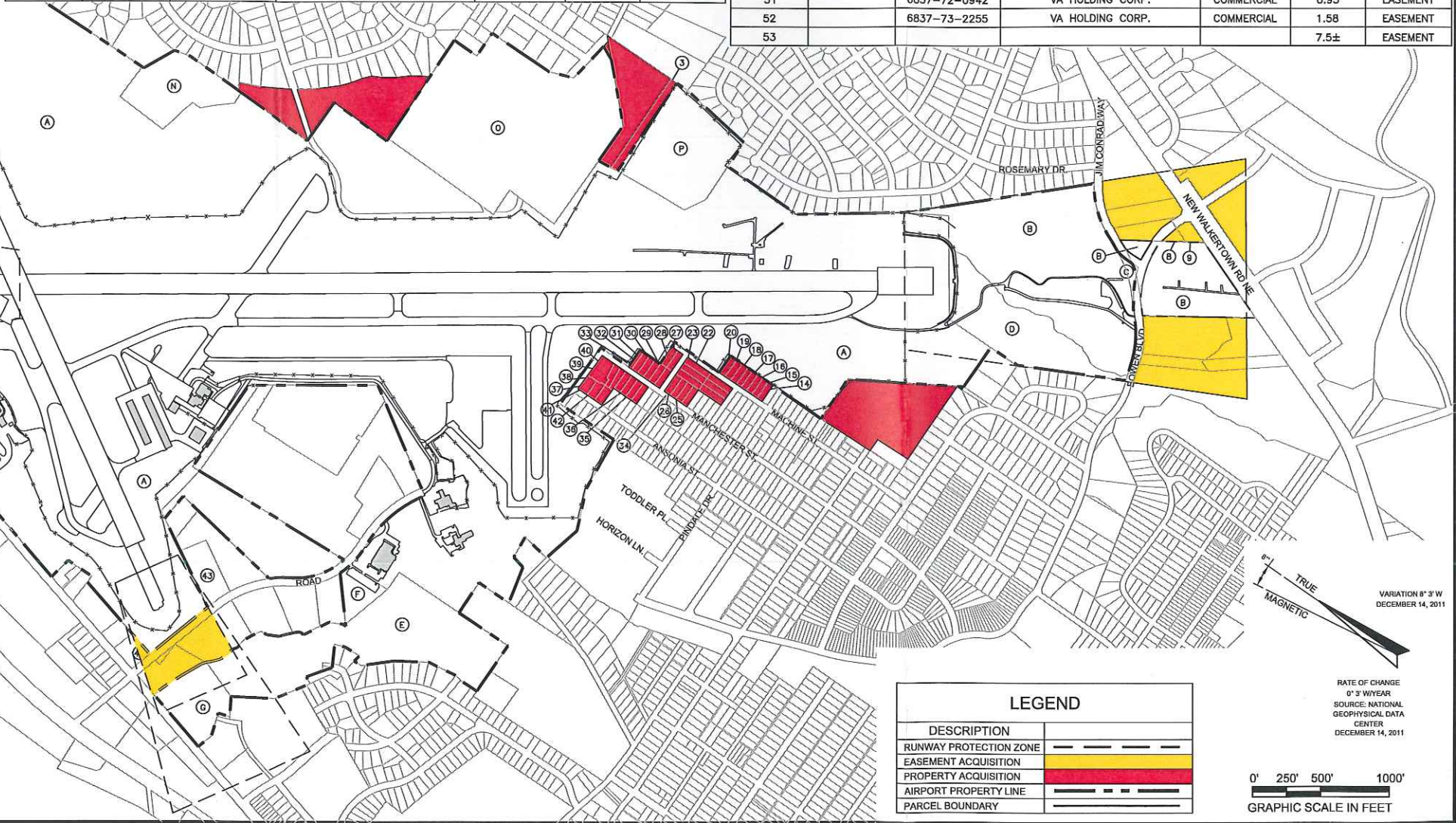
PREPARED BY:
AVCON / **LPA TEAM**

JOB NO.: 2009.130.01
 DRAWN: WLJ
 DESIGN: MAD
 CHECKED: MAD
 DATE: MAY 2012
 SCALE:
 SHEET **15** OF **17**



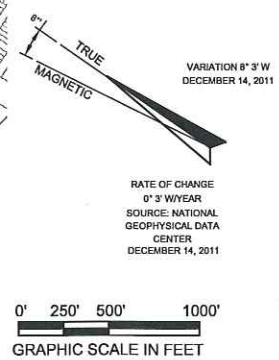
REFERENCE NUMBER	DEED BOOK/PAGE	PIN NUMBER	OWNER	EXISTING LAND USE	ACREAGE	PROPOSED ACTION
1	1458/621		J&P LEASING CO.	VACANT	7.55	FEE SIMPLE
2		6846-18-6345.00	ARTHUR L. BENTON	RESIDENTIAL	4.78	FEE SIMPLE
3	1892/1235		J.D. & LINDA J. OWEN	VACANT	1.00	FEE SIMPLE
4	2774/758		VESTU INVESTMENT LLC	COMMERCIAL	39.66	EASEMENT
5		6846-35-3185	G.B. NALLEY TRUSTEE	VACANT	5.24	EASEMENT
6	2818/359		NCP FOOD STORES HAMLET WS LLC	VACANT	1.68	EASEMENT
7		6846-34-0778	CITY OF WINSTON SALEM	VACANT	0.92	EASEMENT
8		6846-34-1578	CITY OF WINSTON SALEM	VACANT	0.21	EASEMENT
9	2831/1631		JOHN R. & RUTH C. OLIVER JR.	COMMERCIAL	0.48	EASEMENT
10	2640/2397		EASTGATE INVESTMENTS	COMMERCIAL	3.71	EASEMENT
11	1647/4261		DREAMLAND BAPTIST CHURCH	VACANT	2.00	EASEMENT
12	2240/3666		THE SALVATION ARMY	COMMERCIAL	13.15	EASEMENT
13	1041/1203		WILSON E. EDWARDS HEIRS	VACANT	8.05	FEE SIMPLE
14	890/118		JAMES E. McLAURIN	RESIDENTIAL	0.15	FEE SIMPLE
15	2654/847		LARRY & LINDA HUNT	RESIDENTIAL	0.15	FEE SIMPLE
16	1042/706		ANNIE R. SNYDER COX	RESIDENTIAL	0.16	FEE SIMPLE
17	1690/3839		ROSE S. ROBINSON	RESIDENTIAL	0.16	FEE SIMPLE
18	2557/824		GEORGE S. HORTON	RESIDENTIAL	0.17	FEE SIMPLE
19	2925/1109		MARIA M. MARTINEZ	RESIDENTIAL	0.17	FEE SIMPLE
20	1934/416		TERRY & JUANITA GRAHAM	RESIDENTIAL	0.17	FEE SIMPLE
21	2226/2940		MT SINAI FULL GOSPEL	VACANT	0.69	FEE SIMPLE
22	2226/2940		MT SINAI FULL GOSPEL	VACANT	0.46	FEE SIMPLE
23	2226/2940		MT SINAI FULL GOSPEL	VACANT	0.23	FEE SIMPLE
24	2226/2940		MT SINAI FULL GOSPEL	COMMERCIAL	0.17	FEE SIMPLE
25	2226/2940		MT SINAI FULL GOSPEL	VACANT	0.17	FEE SIMPLE
26	2922/1392		MT SINAI FULL GOSPEL	RESIDENTIAL	0.17	FEE SIMPLE

REFERENCE NUMBER	DEED BOOK/PAGE	PIN NUMBER	OWNER	EXISTING LAND USE	ACREAGE	PROPOSED ACTION
27	2226/2940		MT SINAI FULL GOSPEL	VACANT	0.17	FEE SIMPLE
28		6846-07-3163	C.B. POINDEXTER HEIRS	VACANT	0.17	FEE SIMPLE
29	2226/2940		MT SINAI FULL GOSPEL	VACANT	0.17	FEE SIMPLE
30	1719/651		CW MYERS TRADING POST INC.	RESIDENTIAL	0.17	FEE SIMPLE
31	1632/3052		CW MYERS TRADING POST INC.	VACANT	0.17	FEE SIMPLE
32	2948/1009		BENANCIO & TINA SALGADO	RESIDENTIAL	0.17	FEE SIMPLE
33	2948/1009		BENANCIO & TINA SALGADO	RESIDENTIAL	0.27	FEE SIMPLE
34	2924/1545		MANCHESTER TRUST/ MELISSA WIGGINS TRUSTEE	RESIDENTIAL	0.17	FEE SIMPLE
35	2808/2076		OGLESBY PROPERTIES LLC	RESIDENTIAL	0.17	FEE SIMPLE
36	2285/3421		KENNETH TUCKER	RESIDENTIAL	0.17	FEE SIMPLE
37		6846-07-0321	SUSAN INGRAM	RESIDENTIAL	0.19	FEE SIMPLE
38	2779/2758		PAT & PATSY TAYLOR	RESIDENTIAL	0.16	FEE SIMPLE
39	2226/2940		MT SINAI FULL GOSPEL	VACANT	0.18	FEE SIMPLE
40	2779/2758		PAT & PATSY TAYLOR	RESIDENTIAL	0.49	FEE SIMPLE
41	2008/3605		NEW BETHEL BAPTIST CHURCH TRUST	VACANT	0.40	FEE SIMPLE
42	2915/1114		EMMANUEL & DARLENE CROWELL	RESIDENTIAL	0.20	FEE SIMPLE
43	2814/1618		HIS WAY HOLDINGS LLC	COMMERCIAL	2.00	EASEMENT
44	2807/466		WARHAL PROPERTIES LLC	COMMERCIAL	5.26	EASEMENT
45	1768/2348		PIEDMONT CONCRETE COMPANY	COMMERCIAL	1.81	EASEMENT
46	2901/2611		JO MO & COURTNEY LEGINS	COMMERCIAL	0.78	EASEMENT
47	2560/1042		PIEDMONT HAWTHORNE AVIATION	COMMERCIAL	2.6	EASEMENT
48		6837-72-1739	AIRPORT PARTNERS LLC	COMMERCIAL	1.76	EASEMENT
49	2811/794		GOLDEN LEAF PARTNERS LLC	COMMERCIAL	1.18	EASEMENT
50		6837-62-8679	VA HOLDING CORP.	COMMERCIAL	1.19	EASEMENT
51		6837-72-0942	VA HOLDING CORP.	COMMERCIAL	0.93	EASEMENT
52		6837-73-2255	VA HOLDING CORP.	COMMERCIAL	1.58	EASEMENT
53					7.5±	EASEMENT



REFERENCE NUMBER	PIN NUMBER	TYPE	OWNER	ACREAGE	AIP NUMBER	AIP ACREAGE	ACQUISITION DATE
A	6837-90-4905	FEE SIMPLE	FORSYTH COUNTY	541.01	N/A	N/A	PRIOR TO 11/1948
B	6846-25-5192	FEE SIMPLE	FORSYTH COUNTY	33.66	FAAP 9-31-014-5905	33.66	12/23/1958
C	6846-24-7780	FEE SIMPLE	FORSYTH COUNTY	0.28	NON-FED. ACQUISITION	N/A	
D	6846-15-9269	FEE SIMPLE	FORSYTH COUNTY	2.89	FAAP 9-31-014-5905	2.89	12/23/1958
E	6836-78-2036	FEE SIMPLE	FORSYTH COUNTY	20.81	NON-FED. ACQUISITION	N/A	1/30/1981
F	6836-78-6172	FEE SIMPLE	FORSYTH COUNTY	1.73	N/A	N/A	
G	6836-68-3547	FEE SIMPLE	FORSYTH COUNTY	4.22	NON-FED. ACQUISITION	N/A	1/30/1981
H	6837-83-5728	FEE SIMPLE	FORSYTH COUNTY	37.51	NON-FED. ACQUISITION	N/A	
I	6837-95-5072	FEE SIMPLE	FORSYTH COUNTY	0.20	ADAP 8-37-0086-01	0.20	PRIOR TO 6/11/1971
J	6847-05-4421	FEE SIMPLE	FORSYTH COUNTY	42.84	FAAP 9-31-014-5905	42.84	9/9/1965
K	6847-06-4070	FEE SIMPLE	FORSYTH COUNTY	0.57	N/A	N/A	
L	6847-15-8567	FEE SIMPLE	FORSYTH COUNTY	6.40	N/A	N/A	
M	6847-15-9896	FEE SIMPLE	FORSYTH COUNTY	2.89	N/A	N/A	
N	6847-91-9226	FEE SIMPLE	FORSYTH COUNTY	6.07	N/A	N/A	
O	6846-19-1019	FEE SIMPLE	FORSYTH COUNTY	33.33	AIP 3-37-0086-16	33.33	4/13/1995
P	6846-17-6859	FEE SIMPLE	FORSYTH COUNTY	10.98	AIP 3-13-0087-09	10.98	9/6/1988

LEGEND	
DESCRIPTION	
RUNWAY PROTECTION ZONE	
EASEMENT ACQUISITION	
PROPERTY ACQUISITION	
AIRPORT PROPERTY LINE	
PARCEL BOUNDARY	



Plotted By: wjones
 P:\2009\2009_130_01_M...
 Update\AIP-Drawings\14_SRA_AIP.dwg
 May15,2012 - 9:59am

REVISIONS	
DATE	DESCRIPTION

SPONSOR

AIRPORT COMMISSION OF FORSYTH COUNTY

SMITH REYNOLDS AIRPORT

PROJECT

AIRPORT MASTER PLAN UPDATE

SMITH REYNOLDS AIRPORT

WINSTON SALEM, NORTH CAROLINA

SHEET TITLE

AIRPORT PROPERTY MAP

PREPARED BY:

AVCON / **LPA TEAM**

JOB NO.: 2009.130.01

DRAWN: WLJ

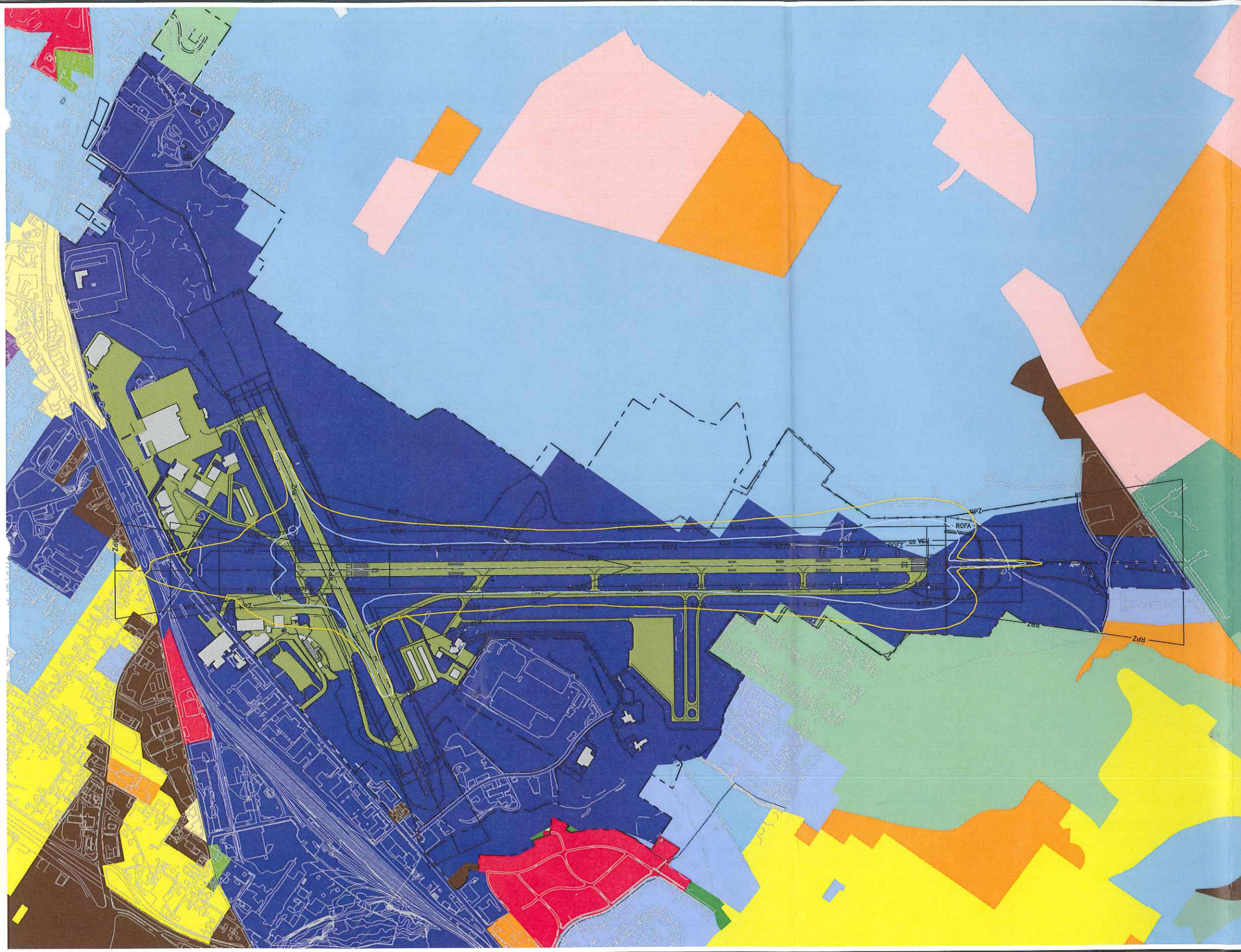
DESIGN: MAD

CHECKED: MAD

DATE: MAY 2012

SCALE:

SHEET **14** OF **17**



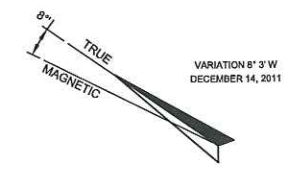
ZONING LEGEND	
	ZONING DISTRICTS
GENERAL BUSINESS (GB)	[Green Box]
GENERAL INDUSTRIAL (GI)	[Blue Box]
HIGHWAY BUSINESS (HB)	[Orange Box]
INSTITUTIONAL & PUBLIC (IP)	[Light Blue Box]
LIMITED BUSINESS (LB)	[Light Green Box]
LIMITED INDUSTRIAL (LI)	[Red Box]
LIMITED OFFICE (LO)	[Light Blue Box]
MANUFACTURED HOUSING (MH)	[Light Green Box]
NEIGHBORHOOD OFFICE (NO)	[Light Green Box]
PEDESTRIAN BUSINESS (PB)	[Yellow Box]
RESIDENTIAL SINGLE FAMILY (RS-7)	[Yellow Box]
RESIDENTIAL SINGLE FAMILY (RS-9)	[Light Blue Box]
RESIDENTIAL SINGLE FAMILY (RS-12)	[Light Blue Box]
RESIDENTIAL MULTIFAMILY (RM-8)	[Purple Box]
RESIDENTIAL MULTIFAMILY (RM-12)	[Light Green Box]
RESIDENTIAL MULTIFAMILY (RM-18)	[Light Blue Box]
RESIDENTIAL SINGLE FAMILY QUADRAPLEX (RSQ)	[Green Box]

THE DESIGNATIONS CONTAINED IN THIS TABLE DO NOT CONSTITUTE A FEDERAL DETERMINATION THAT ANY USE OF LAND COVERED BY THE PROGRAM IS ACCEPTABLE OR UNACCEPTABLE UNDER FEDERAL, STATE, OR LOCAL LAW. THE RESPONSIBILITY FOR DETERMINING THE ACCEPTABLE AND PERMISSIBLE LAND USES AND THE RELATIONSHIP BETWEEN SPECIFIC PROPERTIES AND SPECIFIC NOISE CONTOURS RESTS WITH THE LOCAL AUTHORITIES. FAA DETERMINATIONS UNDER PART 150 ARE NOT INTENDED TO SUBSTITUTE FEDERALLY DETERMINED LAND USES FOR THOSE DETERMINED TO BE APPROPRIATE BY LOCAL AUTHORITIES IN RESPONSE TO LOCALLY DETERMINED NEEDS AND VALUES IN ACHIEVING NOISE COMPATIBLE LAND USES.

NOTES FOR DRAWING

1. FAR A150.101 SOUND EXPOSURE CONTOUR AND LAND USES. *(d) ALL LAND USES ARE NORMALLY COMPATIBLE WITH NOISE LEVELS LESS THAN 65 LDN. LOCAL NEEDS OR VALUES MAY DICTATE FURTHER DELINEATION BASED ON LOCAL REQUIREMENTS OR DETERMINATIONS.*
2. AIRCRAFT SOUND EXPOSURE CONTOURS WERE GENERATED USING FAA INTEGRATED NOISE MODEL (INM) VERSION 7.0B.
3. ADJACENT LAND USES TAKEN FROM THE OFFICIAL ZONING MAP FOR FORSYTH COUNTY, NORTH CAROLINA, DATED 2011

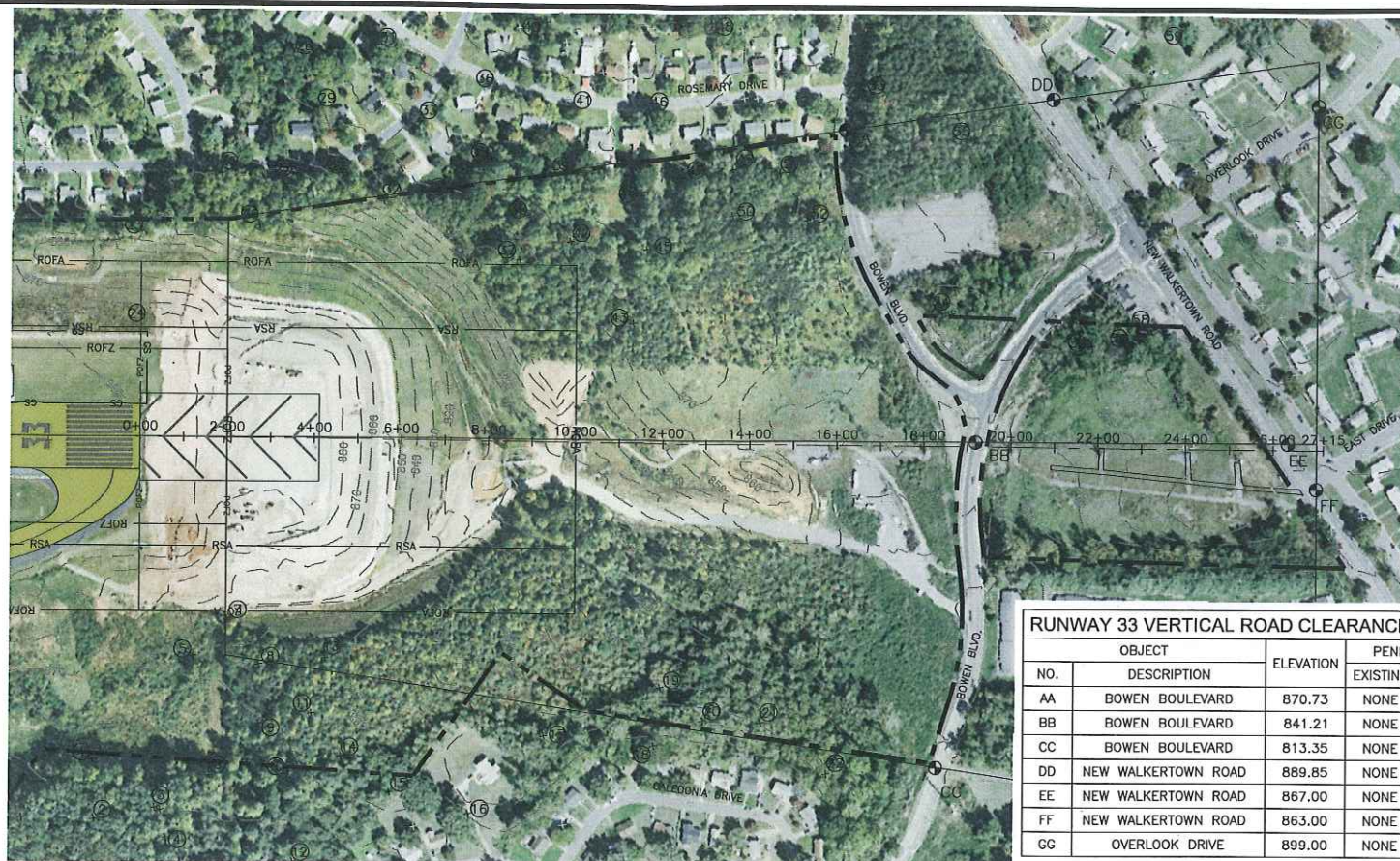
LEGEND	
	ZONING DISTRICTS
EXISTING 65 DNL NOISE CONTOUR (YEAR 2012)	[Yellow Line]
ULTIMATE 65 DNL NOISE CONTOUR (YEAR 2032)	[Blue Line]
AIRFIELD PAVEMENT	[Green Box]
EXISTING BUILDINGS	[Grey Box]



RATE OF CHANGE
0° 3' W/YEAR
SOURCE: NATIONAL
GEOGRAPHICAL DATA
CENTER
DECEMBER 14, 2011

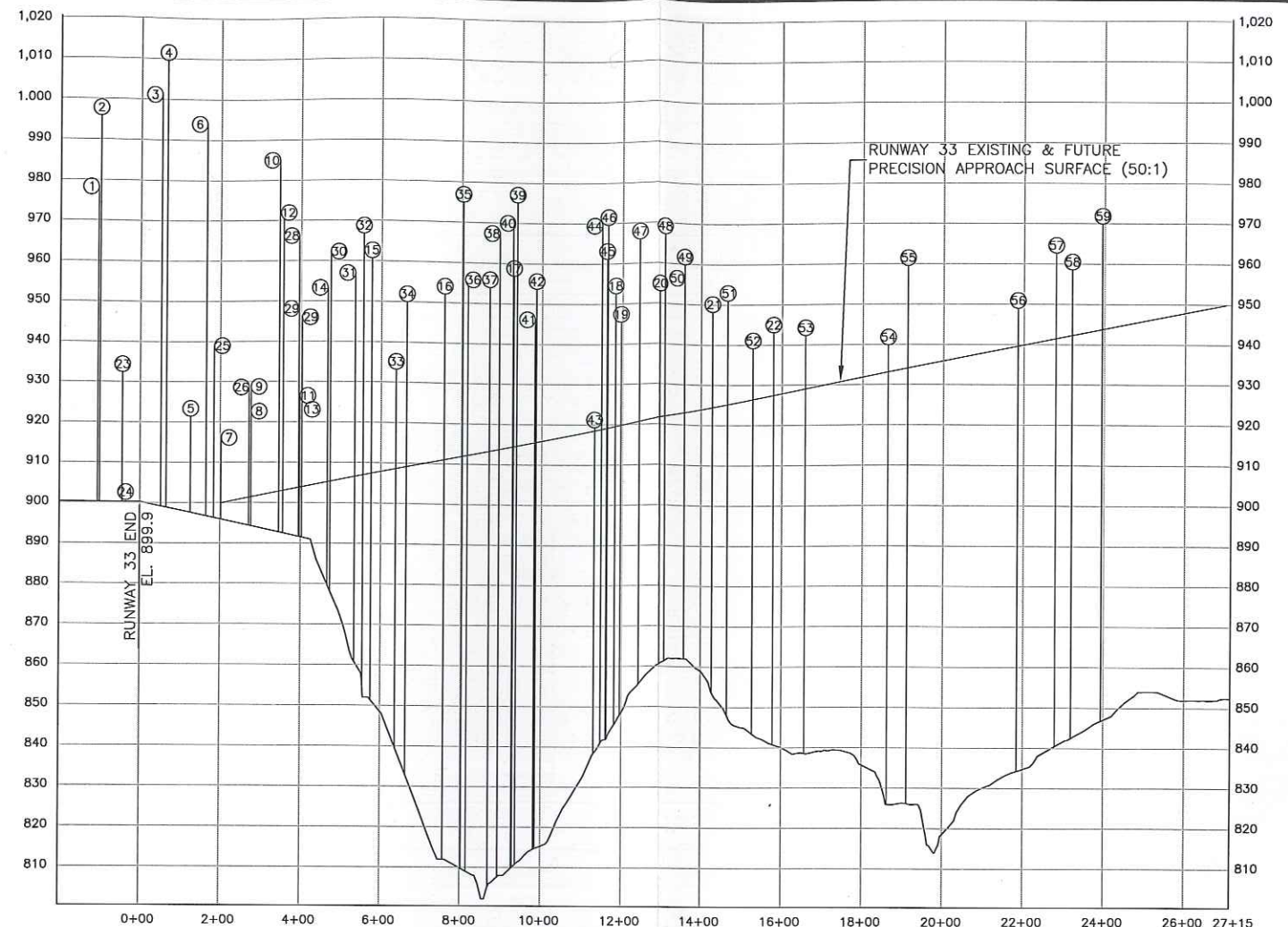
Plotted By: wjones
P:\2009\2009.130.01.k
Update\A_P-Drawings\13_SRA_AJP.dwg May 15, 2012 - 9:56am

<table border="1"> <thead> <tr> <th>DATE</th> <th>REVISIONS DESCRIPTION</th> </tr> </thead> <tbody> <tr><td> </td><td> </td></tr> <tr><td> </td><td> </td></tr> <tr><td> </td><td> </td></tr> <tr><td> </td><td> </td></tr> </tbody> </table>		DATE	REVISIONS DESCRIPTION									SPONSOR AIRPORT COMMISSION OF FORSYTH COUNTY SMITH REYNOLDS AIRPORT	PROJECT AIRPORT MASTER PLAN UPDATE SMITH REYNOLDS AIRPORT WINSTON SALEM, NORTH CAROLINA	SHEET TITLE LAND USE DRAWING	PREPARED BY: 	JOB NO.: 2009.130.01 DRAWN: WLJ DESIGN: MAD CHECKED: MAD DATE: MAY 2012 SCALE:
DATE	REVISIONS DESCRIPTION															
SHEET 13 OF 17																



RUNWAY 33 INNER APPROACH PLAN VIEW
SCALE 1"=200'

RUNWAY 33 VERTICAL ROAD CLEARANCE CHART				
NO.	OBJECT DESCRIPTION	ELEVATION	PENETRATION	
			EXISTING	FUTURE
AA	BOWEN BOULEVARD	870.73	NONE	SAME
BB	BOWEN BOULEVARD	841.21	NONE	SAME
CC	BOWEN BOULEVARD	813.35	NONE	SAME
DD	NEW WALKERTOWN ROAD	889.85	NONE	SAME
EE	NEW WALKERTOWN ROAD	867.00	NONE	SAME
FF	NEW WALKERTOWN ROAD	863.00	NONE	SAME
GG	OVERLOOK DRIVE	899.00	NONE	SAME



RUNWAY 33 APPROACH PROFILE
SCALE 1"=200' HORIZ.
1"=20' VERT.

RUNWAY 33 OBSTRUCTION CHART						
NO.	OBJECT DESCRIPTION	ELEVATION	PART 77 SURFACE	PENETRATION		MITIGATION
				EXISTING	EXISTING	
1	TREE	978.30	TRANSITIONAL	43.09'	N/A	REMOVE
2	TREE	995.82	TRANSITIONAL	14.09'	N/A	REMOVE
3	GROUP OF TREES	1,001.20	TRANSITIONAL	50.65'	N/A	REMOVE
4	GROUP OF TREES	1,009.59	TRANSITIONAL	49.18'	N/A	REMOVE
5	TREE	921.43	TRANSITIONAL	21.21'	N/A	REMOVE
6	TREE	994.02	TRANSITIONAL	49.19'	N/A	REMOVE
7	TREE	916.08	APPROACH	16.58'	N/A	REMOVE
8	TREE	922.62	TRANSITIONAL	19.99'	N/A	REMOVE
9	TREE	928.74	TRANSITIONAL	6.84'	N/A	REMOVE
10	TREE	985.05	TRANSITIONAL	47.46'	N/A	REMOVE
11	TREE	926.51	TRANSITIONAL	8.12'	N/A	REMOVE
12	TREE	970.45	TRANSITIONAL	3.34'	N/A	REMOVE
13	TREE	921.16	APPROACH	16.70'	N/A	REMOVE
14	TREE	953.28	TRANSITIONAL	20.95'	N/A	REMOVE
15	TREE	960.72	TRANSITIONAL	16.91'	N/A	REMOVE
16	TREE	952.10	TRANSITIONAL	2.10'	N/A	REMOVE
17	TREE	956.89	TRANSITIONAL	32.46'	N/A	REMOVE
18	TREE	952.58	TRANSITIONAL	25.65'	N/A	REMOVE
19	TREE	945.49	APPROACH	25.67'	N/A	REMOVE
20	TREE	953.00	APPROACH	31.21'	N/A	REMOVE
21	TREE	948.20	APPROACH	23.76'	N/A	REMOVE
22	TREE	943.06	TRANSITIONAL	7.82'	N/A	REMOVE
23	TREE	932.46	PRIMARY	32.96'	N/A	REMOVE
24	TREE	900.67	PRIMARY	1.17'	N/A	REMOVE
25	TREE	938.94	TRANSITIONAL	24.13'	N/A	REMOVE
26	TREE	928.68	APPROACH	27.36'	N/A	REMOVE
27	TREE	948.10	TRANSITIONAL	33.51'	N/A	REMOVE
28	TREE	966.27	TRANSITIONAL	13.78'	N/A	REMOVE
29	TREE	946.03	TRANSITIONAL	9.82'	N/A	REMOVE
30	TREE	962.28	TRANSITIONAL	48.35'	N/A	REMOVE

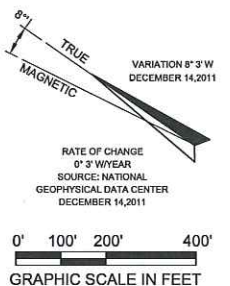
RUNWAY 33 OBSTRUCTION CHART						
NO.	DESCRIPTION	ELEVATION	PART 77 SURFACE	PENETRATION		MITIGATION
				EXISTING	EXISTING	
31	TREE	956.97	TRANSITIONAL	0.85'	N/A	REMOVE
32	TREE	966.83	APPROACH	59.82'	N/A	REMOVE
33	TREE	933.22	TRANSITIONAL	1.95'	N/A	REMOVE
34	TREE	951.13	APPROACH	41.97'	N/A	REMOVE
35	TREE	974.96	TRANSITIONAL	55.65'	N/A	REMOVE
36	TREE	955.40	TRANSITIONAL	12.66'	N/A	REMOVE
37	TREE	955.12	APPROACH	41.84'	N/A	REMOVE
38	TREE	967.52	APPROACH	53.76'	N/A	REMOVE
39	TREE	975.09	APPROACH	60.45'	N/A	REMOVE
40	TREE	968.69	TRANSITIONAL	5.08'	N/A	REMOVE
41	TREE	946.03	TRANSITIONAL	9.70'	N/A	REMOVE
42	TREE	954.15	APPROACH	39.24'	N/A	REMOVE
43	TREE	919.35	APPROACH	0.83'	N/A	REMOVE
44	TREE	969.58	APPROACH	50.71'	N/A	REMOVE
45	TREE	961.18	APPROACH	42.07'	N/A	REMOVE
46	TREE	969.58	TRANSITIONAL	34.20'	N/A	REMOVE
47	TREE	966.00	APPROACH	45.25'	N/A	REMOVE
48	TREE	967.24	TRANSITIONAL	3.88'	N/A	REMOVE
49	TREE	959.81	APPROACH	36.76'	N/A	REMOVE
50	TREE	956.50	APPROACH	31.31'	N/A	REMOVE
51	TREE	950.99	APPROACH	27.94'	N/A	REMOVE
52	TREE	939.14	APPROACH	12.69'	N/A	REMOVE
53	TREE	942.31	TRANSITIONAL	1.56'	N/A	REMOVE
54	TREE	939.83	APPROACH	6.68'	N/A	REMOVE
55	TREE	959.53	APPROACH	25.41'	N/A	REMOVE
56	TREE	949.00	APPROACH	9.40'	N/A	REMOVE
57	TREE	962.69	APPROACH	21.21'	N/A	REMOVE
58	TREE	958.56	APPROACH	16.27'	N/A	REMOVE
59	TREE	969.93	TRANSITIONAL	8.30'	N/A	REMOVE

PROPERTY LINE	EXISTING	FUTURE
	BUILDING RESTRICTION LINE	BRL
RUNWAY PROTECTION ZONE	RPZ	N/C
RUNWAY SAFETY AREA (RSA)	RSA	N/C
OBSTACLE FREE ZONE (OFZ)	ROFZ	N/C
OBJECT FREE AREA (OFA)	ROFA	N/C
RUNWAY VISIBILITY ZONE	RVZ	N/C
PRECISION OBSTACLE FREE ZONE (POFZ)	POFZ	N/C
LOCALIZER CRITICAL AREA	LOC	N/C
GLIDESLOPE CRITICAL AREA	GS	N/C
AIRFIELD PAVEMENT	AS	N/C
BUILDINGS		
ROADS		
FENCING		
GROUND CONTOUR	2100'	N/C
WOODED AREA		N/C
DITCH/CREEK		N/C
AIRPORT REFERENCE POINT		N/C
ROTATING BEACON	★	N/C

N/C = NO CHANGE

NOTES:

- NUMBER DENOTES OBSTRUCTION. DOUBLE LETTER DENOTES VERTICAL ROAD CLEARANCE.
- ALL ELEVATIONS ARE IN ACCORDANCE WITH NATIONAL MAP ACCURACY STANDARDS. SPOT ELEVATIONS AND GROUND CONTOURS ARE DERIVED FROM AERIAL PHOTOGRAMMETRY AND ARE APPROXIMATE. GROUND SURVEYS ARE REQUIRED TO VERIFY ACCURACY OF OBSTRUCTIONS.
- ALL ELEVATIONS ARE IN FEET ABOVE MEAN SEA LEVEL.
GROUND CONTOURS AND OBSTRUCTION ELEVATIONS ARE BASED UPON AERIAL PHOTOGRAPHY PREPARED BY:
WOOLPERT, INC.
8731 RED OAK BOULEVARD, SUITE 101
CHARLOTTE, NC 28217
MARCH 2010
- ALL POTENTIAL OBSTRUCTIONS ARE WITHIN 5 FEET OF FAR PART 77 SURFACE AND SHOULD BE FIELD VERIFIED.
- FAR PART 77 REQUIRES THE FOLLOWING CLEARANCES:
10 FEET ABOVE PRIVATE ROAD
15 FEET ABOVE PUBLICROADS
17 FEET ABOVE INTERSTATE HIGHWAYS
23 FEET ABOVE RAILROADS



Updated AUP - Drawings 11_12_SRA_AUP.dwg May 15, 2012 11:09am
 Plotted By: wjones
 P:\2009\2009_130.01

REVISIONS	
DATE	DESCRIPTION

SPONSOR
AIRPORT COMMISSION OF FORSYTH COUNTY
SMITH REYNOLDS AIRPORT

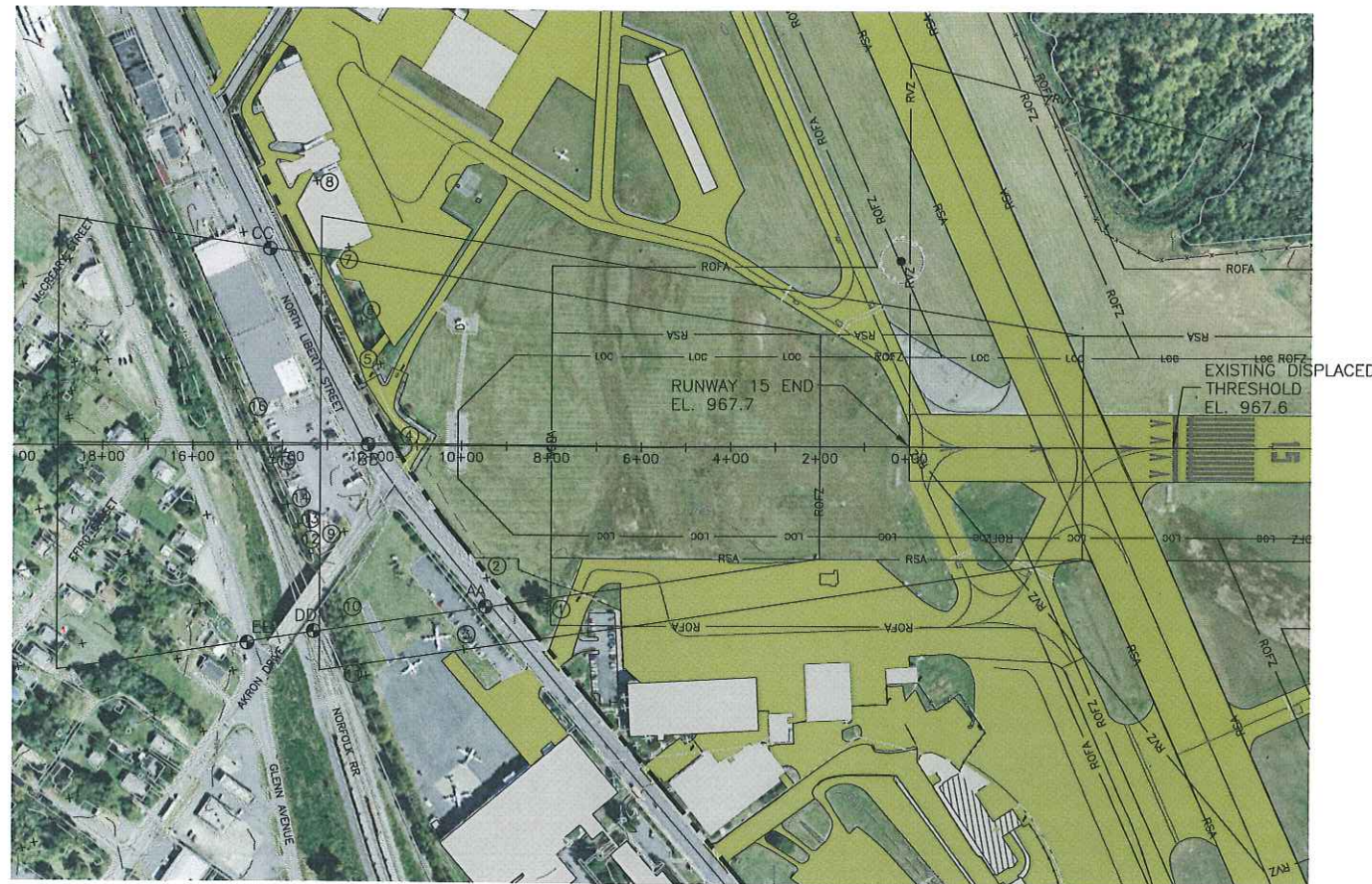
PROJECT
AIRPORT MASTER PLAN UPDATE
SMITH REYNOLDS AIRPORT
WINSTON SALEM, NORTH CAROLINA

SHEET TITLE
RUNWAY 33
APPROACH PROFILE
AND PROTECTION ZONE

PREPARED BY:
 /

JOB NO.:	2009.130.01
DRAWN:	WLJ
DESIGN:	MAD
CHECKED:	MAD
DATE:	MAY 2012
SCALE:	

SHEET **12** OF **17**

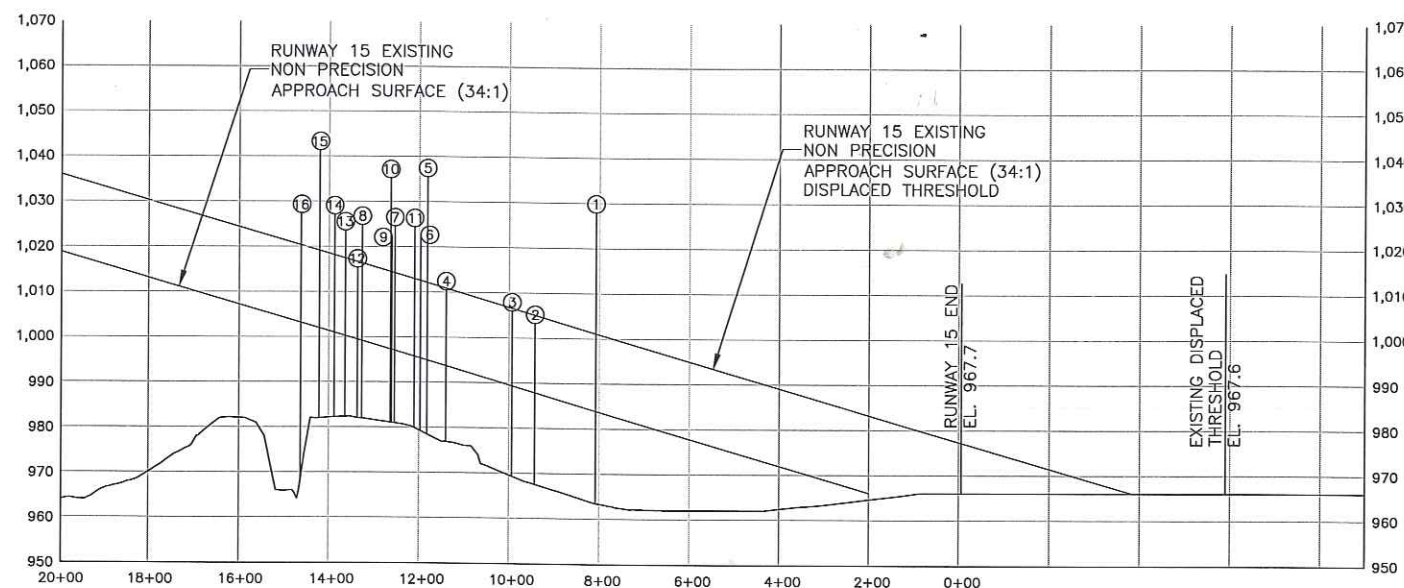
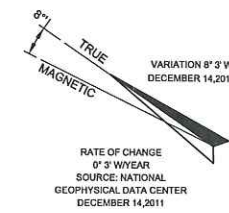


RUNWAY 15 INNER APPROACH PLAN VIEW

SCALE 1"=200'

RUNWAY 15 VERTICAL ROAD CLEARANCE CHART				
NO.	OBJECT	ELEVATION	PENETRATION	
			EXISTING	FUTURE
AA	NORTH LIBERTY STREET	985.30	NONE	SAME
BB	NORTH LIBERTY STREET	995.00	NONE	SAME
CC	NORTH LIBERTY STREET	1,001.58	NONE	SAME
DD	NORFOLK & WESTERN RR	985.00	NONE	SAME
EE	GLENN AVENUE	1003.00	NONE	SAME

RUNWAY15 OBSTRUCTION CHART						
NO.	DESCRIPTION	ELEVATION	PART 77 SURFACE	PENETRATION		MITIGATION
				EXISTING	EXISTING	
1	TREE	1,027.87	TRANSITIONAL	24.16'	N/A	REMOVE
2	TREE	1,003.22	APPROACH	-4.44'	N/A	REMOVE
3	TREE	1,005.92	TRANSITIONAL	-3.24'	N/A	REMOVE
4	GROUP OF TREES	1,010.43	APPROACH	-3.05'	N/A	REMOVE
5	TREE	1,035.48	APPROACH	20.77'	N/A	REMOVE
6	GROUP OF TREES	1,022.52	APPROACH	6.58'	N/A	REMOVE
7	BUILDING	1,024.54	TRANSITIONAL	7.70'	N/A	LIGHT
8	BUILDING	1,024.81	TRANSITIONAL	1.87'	N/A	LIGHT
9	TREE	1,022.20	APPROACH	5.17'	N/A	REMOVE
10	TREE	1,035.20	APPROACH	18.08'	N/A	REMOVE
11	TREE	1,024.39	TRANSITIONAL	8.85'	N/A	REMOVE
12	TREE	1,015.36	APPROACH	-3.91'	N/A	REMOVE
13	TREE	1,023.57	APPROACH	3.50'	N/A	REMOVE
14	TREE	1,027.13	APPROACH	6.37'	N/A	REMOVE
15	GROUP OF TREES	1,041.36	APPROACH	19.60'	N/A	REMOVE
16	TREE	1,027.40	APPROACH	4.45'	N/A	REMOVE



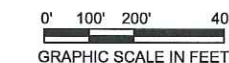
RUNWAY 15 APPROACH PROFILE

SCALE 1"=200' HORIZ.
1"=20' VERT.

LEGEND	EXISTING	FUTURE
	PROPERTY LINE	---
BUILDING RESTRICTION LINE	---BRL---	N/C
RUNWAY PROTECTION ZONE	---RPZ---	N/C
RUNWAY SAFETY AREA (RSA)	---RSA---	N/C
OBSTACLE FREE ZONE (OFZ)	---ROFZ---	N/C
OBJECT FREE AREA (OFA)	---ROFA---	N/C
RUNWAY VISIBILITY ZONE	---RVZ---	N/C
PRECISION OBSTACLE FREE ZONE (POFZ)	---POFZ---	N/C
LOCALIZER CRITICAL AREA	---LOC---	N/C
GLIDESLOPE CRITICAL AREA	---GS---	N/C
AIRFIELD PAVEMENT	---AS---	N/C
BUILDINGS	---[Symbol]---	---
ROADS	---[Symbol]---	---
FENCING	---[Symbol]---	---
GROUND CONTOUR	---[Symbol]---	N/C
WOODED AREA	---[Symbol]---	N/C
DITCH/CREEK	---[Symbol]---	N/C
AIRPORT REFERENCE POINT	---[Symbol]---	N/C
ROTATING BEACON	---[Symbol]---	N/C
N/C = NO CHANGE		

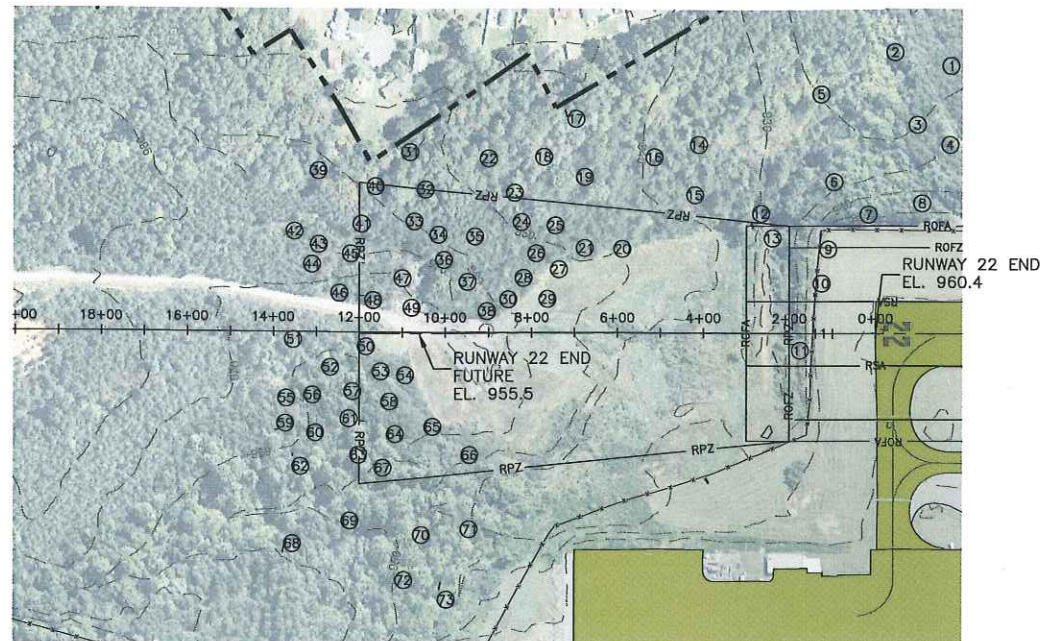
NOTES:

- NUMBER DENOTES OBSTRUCTION. DOUBLE LETTER DENOTES VERTICAL ROAD CLEARANCE.
- ALL ELEVATIONS ARE IN ACCORDANCE WITH NATIONAL MAP ACCURACY STANDARDS. SPOT ELEVATIONS AND GROUND CONTOURS ARE DERIVED FROM AERIAL PHOTOGRAMMETRY AND ARE APPROXIMATE. GROUND SURVEYS ARE REQUIRED TO VERIFY ACCURACY OF OBSTRUCTIONS.
- ALL ELEVATIONS ARE IN FEET ABOVE MEAN SEA LEVEL.
GROUND CONTOURS AND OBSTRUCTION ELEVATIONS ARE BASED UPON AERIAL PHOTOGRAPHY PREPARED BY:
WOOLPERT, INC.
8731 RED OAK BOULEVARD, SUITE 101
CHARLOTTE, NC 28217
MARCH 2010
- ALL POTENTIAL OBSTRUCTIONS ARE WITHIN 5 FEET OF FAR PART 77 SURFACE AND SHOULD BE FIELD VERIFIED.
- FAR PART 77 REQUIRES THE FOLLOWING CLEARANCES:
10 FEET ABOVE PRIVATE ROADS
15 FEET ABOVE PUBLIC ROADS
17 FEET ABOVE INTERSTATE HIGHWAYS
23 FEET ABOVE RAILROADS



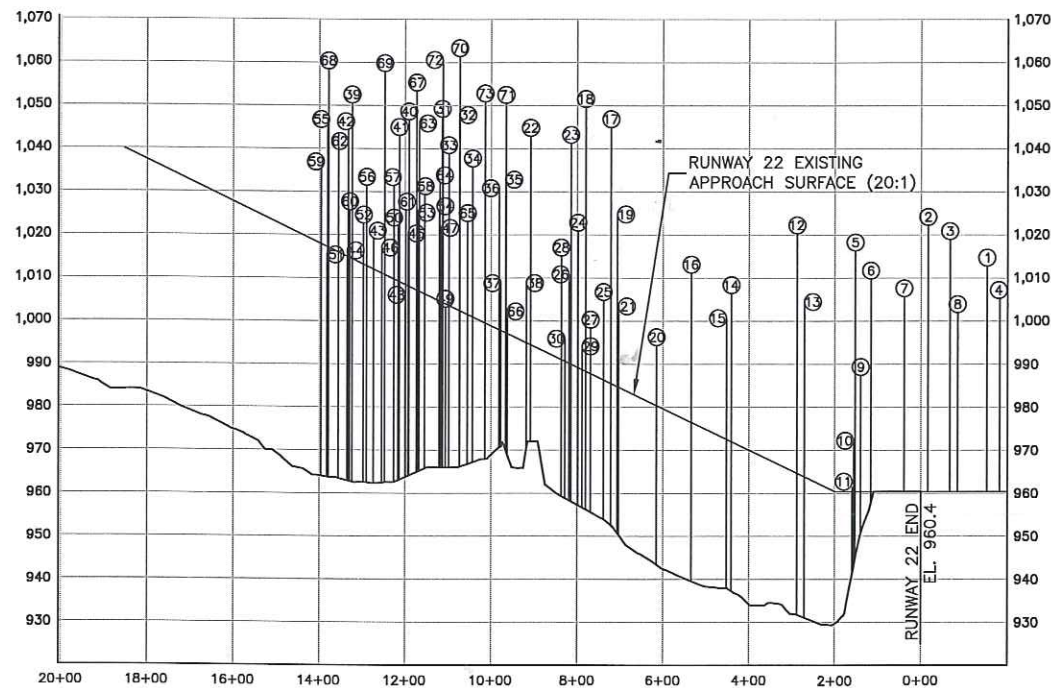
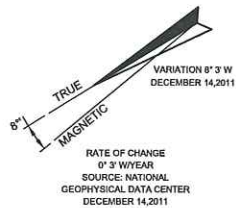
Plotted By: wjones
 P:\2009\ALP-Drawings\1_12_SRA_ALP.dwg May15,2012 - 11:06am

<table border="1" style="width:100%; border-collapse: collapse;"> <thead> <tr> <th style="width:15%;">DATE</th> <th>REVISIONS DESCRIPTION</th> </tr> </thead> <tbody> <tr><td> </td><td> </td></tr> <tr><td> </td><td> </td></tr> <tr><td> </td><td> </td></tr> </tbody> </table>	DATE	REVISIONS DESCRIPTION							<p>SPONSOR:</p> <p>AIRPORT COMMISSION OF FORSYTH COUNTY</p> <p>SMITH REYNOLDS AIRPORT</p>	<p>PROJECT:</p> <p>AIRPORT MASTER PLAN UPDATE SMITH REYNOLDS AIRPORT WINSTON SALEM, NORTH CAROLINA</p>	<p>SHEET TITLE:</p> <p>RUNWAY 15 APPROACH PROFILE AND PROTECTION ZONE</p>	<p>PREPARED BY:</p> <p>AVCON / LPA TEAM</p>	<table border="1" style="width:100%; border-collapse: collapse;"> <tr><td>JOB NO.:</td><td>2009.130.01</td></tr> <tr><td>DRAWN:</td><td>WLJ</td></tr> <tr><td>DESIGN:</td><td>MAD</td></tr> <tr><td>CHECKED:</td><td>MAD</td></tr> <tr><td>DATE:</td><td>MAY 2012</td></tr> <tr><td>SCALE:</td><td> </td></tr> </table>	JOB NO.:	2009.130.01	DRAWN:	WLJ	DESIGN:	MAD	CHECKED:	MAD	DATE:	MAY 2012	SCALE:	
DATE	REVISIONS DESCRIPTION																								
JOB NO.:	2009.130.01																								
DRAWN:	WLJ																								
DESIGN:	MAD																								
CHECKED:	MAD																								
DATE:	MAY 2012																								
SCALE:																									
SHEET 11 OF 17																									



RUNWAY 22 PROTECTION ZONE

SCALE 1"=200'



RUNWAY 22 APPROACH PROFILE

SCALE 1"=200' HORIZ.
1"=20' VERT.

RUNWAY 22 OBSTRUCTION CHART							
NO.	OBJECT DESCRIPTION	ELEVATION	PART 77 SURFACE	PENETRATION		MITIGATION	
				EXISTING	EXISTING	FUTURE	FUTURE
1	TREE	1,012.78	TRANSITIONAL	-1.57'	N/A	REMOVE	
2	TREE	1,022.23	TRANSITIONAL	-2.41'	N/A	REMOVE	
3	TREE	1,018.94	TRANSITIONAL	18.94'	N/A	REMOVE	
4	TREE	1,005.25	TRANSITIONAL	17.28'	N/A	REMOVE	
5	TREE	1,011.96	TRANSITIONAL	-4.36'	N/A	REMOVE	
6	TREE	1,009.77	TRANSITIONAL	23.21'	N/A	REMOVE	
7	TREE	1,005.66	TRANSITIONAL	31.98'	N/A	REMOVE	
8	TREE	1,001.97	TRANSITIONAL	28.67'	N/A	REMOVE	
9	TREE	987.39	PRIMARY	26.89'	N/A	REMOVE	
10	TREE	972.22	PRIMARY	11.72'	N/A	REMOVE	
11	TREE	961.39	PRIMARY	0.89'	N/A	REMOVE	
12	TREE	1,020.32	TRANSITIONAL	38.55'	N/A	REMOVE	
13	TREE	1,004.46	TRANSITIONAL	29.57'	N/A	REMOVE	
14	TREE	1,006.42	TRANSITIONAL	-3.53'	N/A	REMOVE	
15	TREE	1,000.68	TRANSITIONAL	8.30'	N/A	REMOVE	
16	TREE	1,011.18	TRANSITIONAL	3.56'	N/A	REMOVE	
17	TREE	1,044.95	TRANSITIONAL	12.85'	N/A	REMOVE	
18	TREE	1,049.63	TRANSITIONAL	26.86'	N/A	REMOVE	
19	TREE	1,024.79	TRANSITIONAL	16.15'	N/A	REMOVE	
20	GROUP OF TREES	994.34	TRANSITIONAL	5.92'	N/A	REMOVE	
21	GROUP OF TREES	1,003.44	TRANSITIONAL	15.66'	N/A	REMOVE	
22	TREE	1,042.91	TRANSITIONAL	16.15'	N/A	REMOVE	
23	TREE	1,041.28	TRANSITIONAL	31.08'	N/A	REMOVE	
24	TREE	1,020.88	TRANSITIONAL	23.02'	N/A	REMOVE	
25	TREE	1,004.80	TRANSITIONAL	13.06'	N/A	REMOVE	
26	TREE	1,010.84	APPROACH	19.37'	N/A	REMOVE	
27	TREE	998.35	APPROACH	9.38'	N/A	REMOVE	
28	GROUP OF TREES	1,015.11	APPROACH	22.75'	N/A	REMOVE	
29	TREE	994.14	APPROACH	4.14'	N/A	REMOVE	
30	TREE	995.90	APPROACH	3.93'	N/A	REMOVE	
31	TREE	1,047.32	TRANSITIONAL	15.97'	N/A	REMOVE	
32	TREE	1,047.87	TRANSITIONAL	30.70'	N/A	REMOVE	
33	TREE	1,038.80	TRANSITIONAL	31.46'	N/A	REMOVE	
34	TREE	1,035.81	APPROACH	33.16'	N/A	REMOVE	
35	GROUP OF TREES	1,032.83	TRANSITIONAL	32.83'	N/A	REMOVE	
36	GROUP OF TREES	1,030.86	APPROACH	31.30'	N/A	REMOVE	
37	GROUP OF TREES	1,008.39	APPROACH	9.02'	N/A	REMOVE	

RUNWAY 22 OBSTRUCTION CHART							
NO.	OBJECT DESCRIPTION	ELEVATION	PART 77 SURFACE	PENETRATION		MITIGATION	
				EXISTING	EXISTING	FUTURE	FUTURE
38	GROUP OF TREES	1,008.39	APPROACH	11.96'	N/A	REMOVE	
39	TREE	1,050.58	TRANSITIONAL	19.67'	N/A	REMOVE	
40	TREE	1,046.71	TRANSITIONAL	25.91'	N/A	REMOVE	
41	GROUP OF TREES	1,043.08	TRANSITIONAL	28.25'	N/A	REMOVE	
42	GROUP OF TREES	1,044.43	APPROACH	27.30'	N/A	REMOVE	
43	TREE	1,019.25	APPROACH	5.05'	N/A	REMOVE	
44	TREE	1,016.40	APPROACH	-0.83'	N/A	REMOVE	
45	GROUP OF TREES	1,020.41	APPROACH	6.79'	N/A	REMOVE	
46	GROUP OF TREES	1,016.94	APPROACH	3.72'	N/A	REMOVE	
47	GROUP OF TREES	1,021.76	APPROACH	15.50'	N/A	REMOVE	
48	TREE	1,006.15	APPROACH	-4.37'	N/A	REMOVE	
49	TREE	1,003.23	APPROACH	-2.60'	N/A	REMOVE	
50	GROUP OF TREES	1,022.31	APPROACH	10.98'	N/A	REMOVE	
51	TREE	1,015.52	APPROACH	-4.09'	N/A	REMOVE	
52	GROUP OF TREES	1,022.71	APPROACH	7.31'	N/A	REMOVE	
53	TREE	1,025.29	APPROACH	16.29'	N/A	REMOVE	
54	GROUP OF TREES	1,025.29	APPROACH	18.76'	N/A	REMOVE	
55	GROUP OF TREES	1,045.59	APPROACH	26.05'	N/A	REMOVE	
56	GROUP OF TREES	1,031.40	APPROACH	16.38'	N/A	REMOVE	
57	GROUP OF TREES	1,031.47	APPROACH	19.66'	N/A	REMOVE	
58	GROUP OF TREES	1,029.37	APPROACH	21.11'	N/A	REMOVE	
59	TREE	1,035.41	APPROACH	25.10'	N/A	REMOVE	
60	GROUP OF TREES	1,025.77	APPROACH	-1.19'	N/A	REMOVE	
61	TREE	1,045.93	TRANSITIONAL	33.43'	N/A	REMOVE	
62	TREE	1,043.62	TRANSITIONAL	23.13'	N/A	REMOVE	
63	GROUP OF TREES	1,045.93	TRANSITIONAL	33.43'	N/A	REMOVE	
64	GROUP OF TREES	1,032.22	APPROACH	23.76'	N/A	REMOVE	
65	GROUP OF TREES	1,023.12	APPROACH	19.84'	N/A	REMOVE	
66	TREE	1,002.22	TRANSITIONAL	-1.84'	N/A	REMOVE	
67	TREE	1,053.42	TRANSITIONAL	32.17'	N/A	REMOVE	
68	TREE	1,058.44	TRANSITIONAL	6.01'	N/A	REMOVE	
69	TREE	1,057.90	TRANSITIONAL	17.70'	N/A	REMOVE	
70	TREE	1,061.43	TRANSITIONAL	28.31'	N/A	REMOVE	
71	TREE	1,050.57	TRANSITIONAL	22.54'	N/A	REMOVE	
72	TREE	1,060.62	TRANSITIONAL	11.53'	N/A	REMOVE	
73	TREE	1,050.92	TRANSITIONAL	-1.26'	N/A	REMOVE	

LEGEND		
	EXISTING	FUTURE
PROPERTY LINE	---	---
BUILDING RESTRICTION LINE	---BRL---	N/C
RUNWAY PROTECTION ZONE	---RPZ---	N/C
RUNWAY SAFETY AREA (RSA)	---RSA---	N/C
OBSTACLE FREE ZONE (OFZ)	---OFZ---	N/C
OBJECT FREE AREA (OFA)	---OFA---	N/C
RUNWAY VISIBILITY ZONE	---RVZ---	N/C
PRECISION OBSTACLE FREE ZONE (POFZ)	---POFZ---	N/C
LOCALIZER CRITICAL AREA	---LCA---	N/C
GLIDESLOPE CRITICAL AREA	---GSA---	N/C
AIRFIELD PAVEMENT	---	N/C
BUILDINGS	---	---
ROADS	---	---
FENCING	---	---
GROUND CONTOUR	---2100---	N/C
WOODED AREA	---	N/C
DITCH/CREEK	---	N/C
AIRPORT REFERENCE POINT	---	N/C
ROTATING BEACON	---	---

N/C = NO CHANGE

NOTES:

- NUMBER DENOTES OBSTRUCTION. DOUBLE LETTER DENOTES VERTICAL ROAD CLEARANCE.
- ALL ELEVATIONS ARE IN ACCORDANCE WITH NATIONAL MAP ACCURACY STANDARDS. SPOT ELEVATIONS AND GROUND CONTOURS ARE DERIVED FROM AERIAL PHOTOGRAMMETRY AND ARE APPROXIMATE. GROUND SURVEYS ARE REQUIRED TO VERIFY ACCURACY OF OBSTRUCTIONS.
- ALL ELEVATIONS ARE IN FEET ABOVE MEAN SEA LEVEL.
GROUND CONTOURS AND OBSTRUCTION ELEVATIONS ARE BASED UPON AERIAL PHOTOGRAPHY PREPARED BY:
WOOLPERT, INC.
8731 RED OAK BOULEVARD, SUITE 101
CHARLOTTE, NC 28217
MARCH 2010
- ALL POTENTIAL OBSTRUCTIONS ARE WITHIN 5 FEET OF FAR PART 77 SURFACE AND SHOULD BE FIELD VERIFIED.
- ULTIMATE RUNWAY 22 EXTENSION, OBSTRUCTIONS, NOR RPZ ARE SHOWN. OBSTRUCTIONS SHOULD BE CHECKED AND VERIFIED ALONG WITH THE JUSTIFICATION FOR THE RUNWAY EXTENSION.
- FAR PART 77 REQUIRES THE FOLLOWING CLEARANCES:
10 FEET ABOVE PRIVATE ROADS
15 FEET ABOVE PUBLIC ROADS
17 FEET ABOVE INTERSTATE HIGHWAYS
23 FEET ABOVE RAILROADS



Plotted By: wjones
 PL 2009.130.01 Master Plan Update\AUP-Drawings\08_10_SRA_AUP.dwg May 15, 2012 - 9:54am

REVISIONS	
DATE	DESCRIPTION

SPONSOR

AIRPORT COMMISSION OF FORSYTH COUNTY

SMITH REYNOLDS AIRPORT

PROJECT

**AIRPORT MASTER PLAN UPDATE
SMITH REYNOLDS AIRPORT
WINSTON SALEM, NORTH CAROLINA**

SHEET TITLE

**RUNWAY 22
APPROACH PROFILE
AND PROTECTION ZONE**

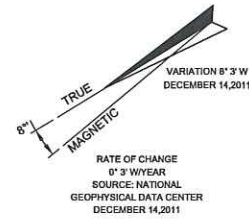
PREPARED BY:

JOB NO.: 2009.130.01
 DRAWN: WLJ
 DESIGN: MAD
 CHECKED: MAD
 DATE: MAY 2012
 SCALE:
 SHEET **10** OF **17**



RUNWAY 4 PROTECTION ZONE

SCALE 1"=200'

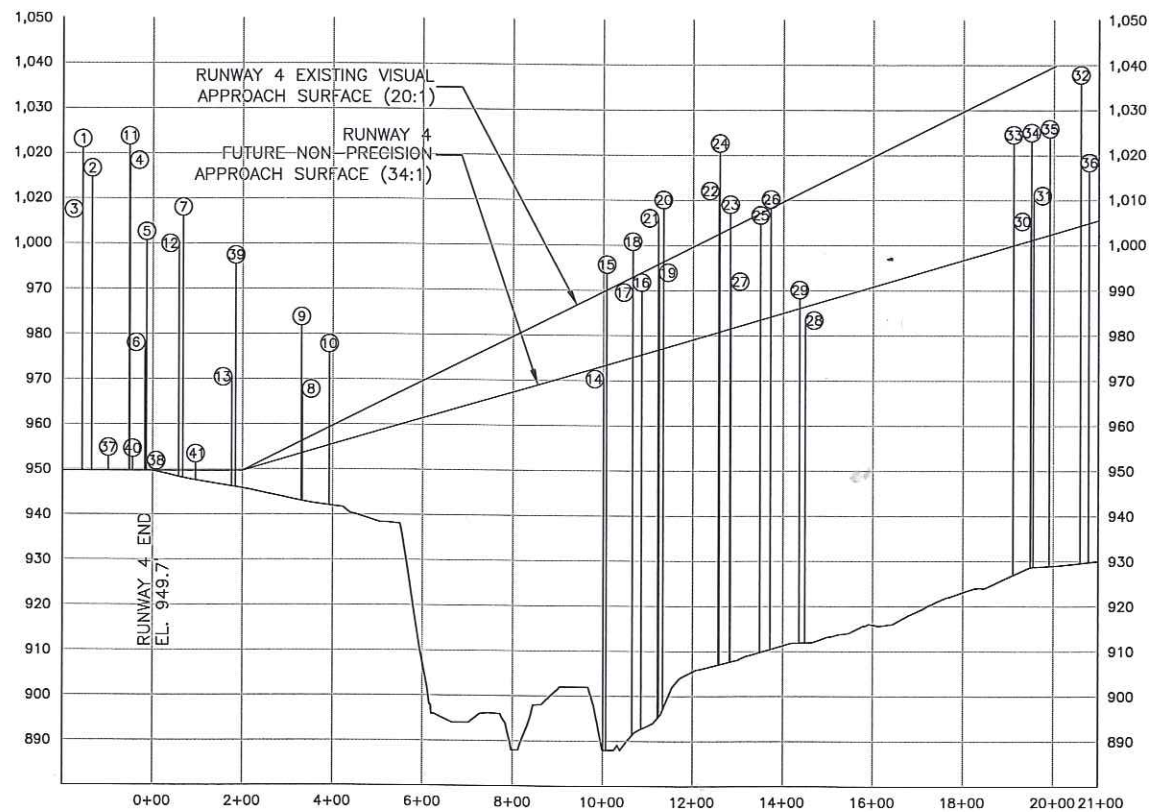


VERTICAL ROAD CLEARANCE CHART				
NO.	OBJECT DESCRIPTION	ELEVATION	PENETRATION	
			EXISTING	FUTURE
AA	FAIRCHILD ROAD	916.67	NONE	SAME
BB	FAIRCHILD ROAD	911.16	NONE	SAME
CC	FAIRCHILD ROAD	919.02	NONE	SAME
DD	NORTH LIBERTY STREET	919.90	NONE	SAME
EE	NORTH LIBERTY STREET	921.82	NONE	SAME

RUNWAY 4 OBSTRUCTION CHART						
NO.	OBJECT DESCRIPTION	ELEVATION	PART 77 SURFACE	PENETRATION		
				EXISTING	EXISTING	FUTURE
1	TREE	1,021.23	TRANSITIONAL	11.23'	N/A	REMOVE
2	TREE	1,014.73	TRANSITIONAL	21.57'	N/A	REMOVE
3	TREE	1,007.54	TRANSITIONAL	46.57'	N/A	REMOVE
4	TREE	1,018.42	TRANSITIONAL	8.42'	N/A	REMOVE
5	TREE	1,000.70	TRANSITIONAL	11.75'	N/A	REMOVE
6	TREE	978.05	TRANSITIONAL	2.18'	N/A	REMOVE
7	TREE	1,006.11	TRANSITIONAL	49.53'	N/A	REMOVE
8	TREE	967.73	APPROACH	39.38'	N/A	REMOVE
9	TREE	981.83	APPROACH	53.74'	N/A	REMOVE
10	TREE	975.84	APPROACH	39.92'	N/A	REMOVE
11	TREE	1,021.88	TRANSITIONAL	44.71'	N/A	REMOVE
12	TREE	1,019.15	TRANSITIONAL	40.08'	N/A	REMOVE
13	TREE	970.43	TRANSITIONAL	-3.40'	N/A	REMOVE
14	TREE	970.32	APPROACH	-2.82'	N/A	REMOVE
15	TREE	993.76	APPROACH	20.42'	N/A	REMOVE
16	TREE	989.81	APPROACH	14.18'	N/A	REMOVE
17	TREE	989.54	APPROACH	14.50'	N/A	REMOVE
18	TREE	998.87	TRANSITIONAL	16.75'	N/A	REMOVE
19	TREE	993.96	TRANSITIONAL	-3.94'	N/A	REMOVE
20	TREE	1,008.14	APPROACH	31.09'	N/A	REMOVE
21	GROUP OF TREES	1,006.03	APPROACH	29.32'	N/A	REMOVE
22	TREE	1,012.09	TRANSITIONAL	20.23'	N/A	REMOVE
23	TREE	1,006.98	APPROACH	25.56'	N/A	REMOVE
24	TREE	1,020.68	APPROACH	39.95'	N/A	REMOVE
25	TREE	1,004.73	APPROACH	21.35'	N/A	REMOVE
26	TREE	1,008.27	TRANSITIONAL	-0.93'	N/A	REMOVE
27	TREE	991.99	APPROACH	10.53'	N/A	REMOVE
28	TREE	983.41	APPROACH	-2.91'	N/A	REMOVE
29	TREE	988.18	APPROACH	2.24'	N/A	REMOVE
30	TREE	1,000.49	APPROACH	4.31'	N/A	REMOVE
31	TREE	1,005.35	APPROACH	9.86'	N/A	REMOVE
32	GROUP OF TREES	1,011.07	APPROACH	31.59'	N/A	REMOVE
33	TREE	1,035.88	TRANSITIONAL	12.28'	N/A	REMOVE
34	TREE	1,022.58	TRANSITIONAL	-1.64'	N/A	REMOVE
35	TREE	1,023.08	APPROACH	21.68'	N/A	REMOVE
36	BILLBOARD	1,023.94	APPROACH	11.60'	N/A	LIGHT
37	TREE	952.90	PRIMARY	3.30'	N/A	REMOVE
38	TREE	949.89	PRIMARY	0.29'	N/A	REMOVE
39	TREE	995.50	PRIMARY	45.90'	N/A	REMOVE
40	TREE	952.63	PRIMARY	3.03'	N/A	REMOVE
41	TREE	951.46	PRIMARY	1.86'	N/A	REMOVE

LEGEND		
	EXISTING	FUTURE
PROPERTY LINE	---	---
BUILDING RESTRICTION LINE	---BRL---	N/C
RUNWAY PROTECTION ZONE	---RPZ---	N/C
RUNWAY SAFETY AREA (RSA)	---RSA---	N/C
OBSTACLE FREE ZONE (OFZ)	---ROFZ---	N/C
OBJECT FREE AREA (OFA)	---ROFA---	N/C
RUNWAY VISIBILITY ZONE	---RVZ---	N/C
PRECISION OBSTACLE FREE ZONE (POFZ)	---POFZ---	N/C
LOCALIZER CRITICAL AREA	---	N/C
GLIDESLOPE CRITICAL AREA	---	N/C
AIRFIELD PAVEMENT	---	N/C
BUILDINGS	---	---
ROADS	---	---
FENCING	---	---
GROUND CONTOUR	---2100---	N/C
WOODED AREA	---	N/C
DITCH/CREEK	---	N/C
AIRPORT REFERENCE POINT	⊕	N/C
ROTATING BEACON	★	N/C

N/C = NO CHANGE

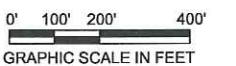


RUNWAY 4 APPROACH PROFILE

SCALE 1"=200' HORIZ.
1"=20' VERT.

NOTES:

- NUMBER DENOTES OBSTRUCTION. DOUBLE LETTER DENOTES VERTICAL ROAD CLEARANCE.
- ALL ELEVATIONS ARE IN ACCORDANCE WITH NATIONAL MAP ACCURACY STANDARDS. SPOT ELEVATIONS AND GROUND CONTOURS ARE DERIVED FROM AERIAL PHOTOGRAMMETRY AND ARE APPROXIMATE. GROUND SURVEYS ARE REQUIRED TO VERIFY ACCURACY OF OBSTRUCTIONS.
- ALL ELEVATIONS ARE IN FEET ABOVE MEAN SEA LEVEL.
GROUND CONTOURS AND OBSTRUCTION ELEVATIONS ARE BASED UPON AERIAL PHOTOGRAPHY PREPARED BY:
WOOLPERT, INC.
8731 RED OAK BOULEVARD, SUITE 101
CHARLOTTE, NC 28217
MARCH 2010
- ALL POTENTIAL OBSTRUCTIONS ARE WITHIN 5 FEET OF FAR PART 77 SURFACE AND SHOULD BE FIELD VERIFIED.
- FAR PART 77 REQUIRES THE FOLLOWING CLEARANCES:
10 FEET ABOVE PRIVATE ROADS
15 FEET ABOVE PUBLIC ROADS
17 FEET ABOVE INTERSTATE HIGHWAYS
23 FEET ABOVE RAILROADS



Plotted By: Wjones P:\2009\2009_1301\ Update ALP-Drawings\09_10_SRA_ALP.dwg May15,2012 - 10:41 am

REVISIONS	
DATE	DESCRIPTION

SPONSOR

AIRPORT COMMISSION OF FORSYTH COUNTY

SMITH REYNOLDS AIRPORT

PROJECT

AIRPORT MASTER PLAN UPDATE
SMITH REYNOLDS AIRPORT
WINSTON SALEM, NORTH CAROLINA

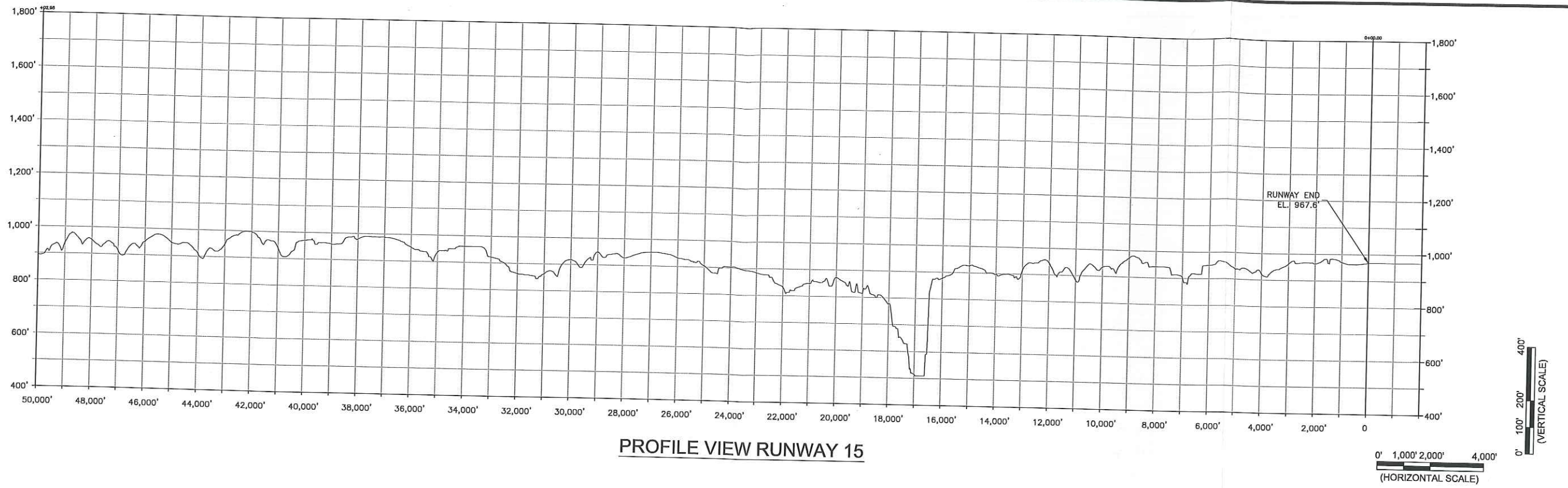
SHEET TITLE

RUNWAY 4
APPROACH PROFILE
AND PROTECTION ZONE

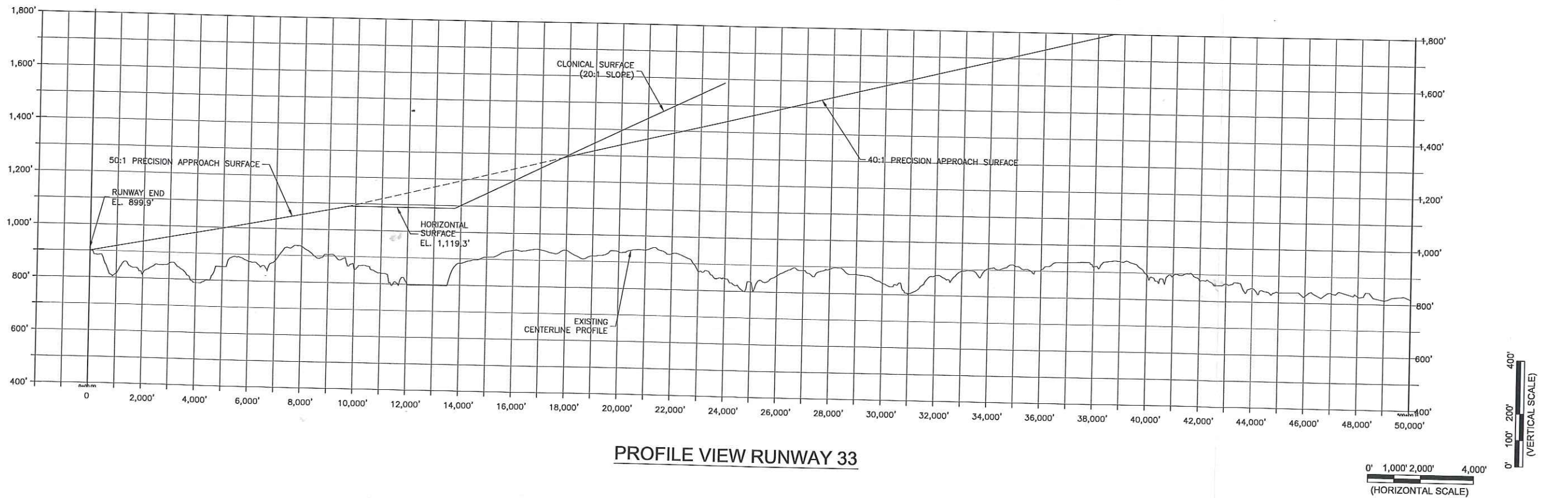
PREPARED BY:

JOB NO.:	2009.130.01
DRAWN:	WLJ
DESIGN:	MAD
CHECKED:	MAD
DATE:	MAY 2012
SCALE:	

SHEET **9** OF **17**



PROFILE VIEW RUNWAY 15



PROFILE VIEW RUNWAY 33

Update:ALP-Drawings_05_06_07_08_SRA_ALP.dwg May 15, 2012 - 9:08am

REVISIONS	
DATE	DESCRIPTION

SPONSOR

AIRPORT COMMISSION OF FORSYTH COUNTY

SMITH REYNOLDS AIRPORT

PROJECT

AIRPORT MASTER PLAN UPDATE
SMITH REYNOLDS AIRPORT
WINSTON SALEM, NORTH CAROLINA

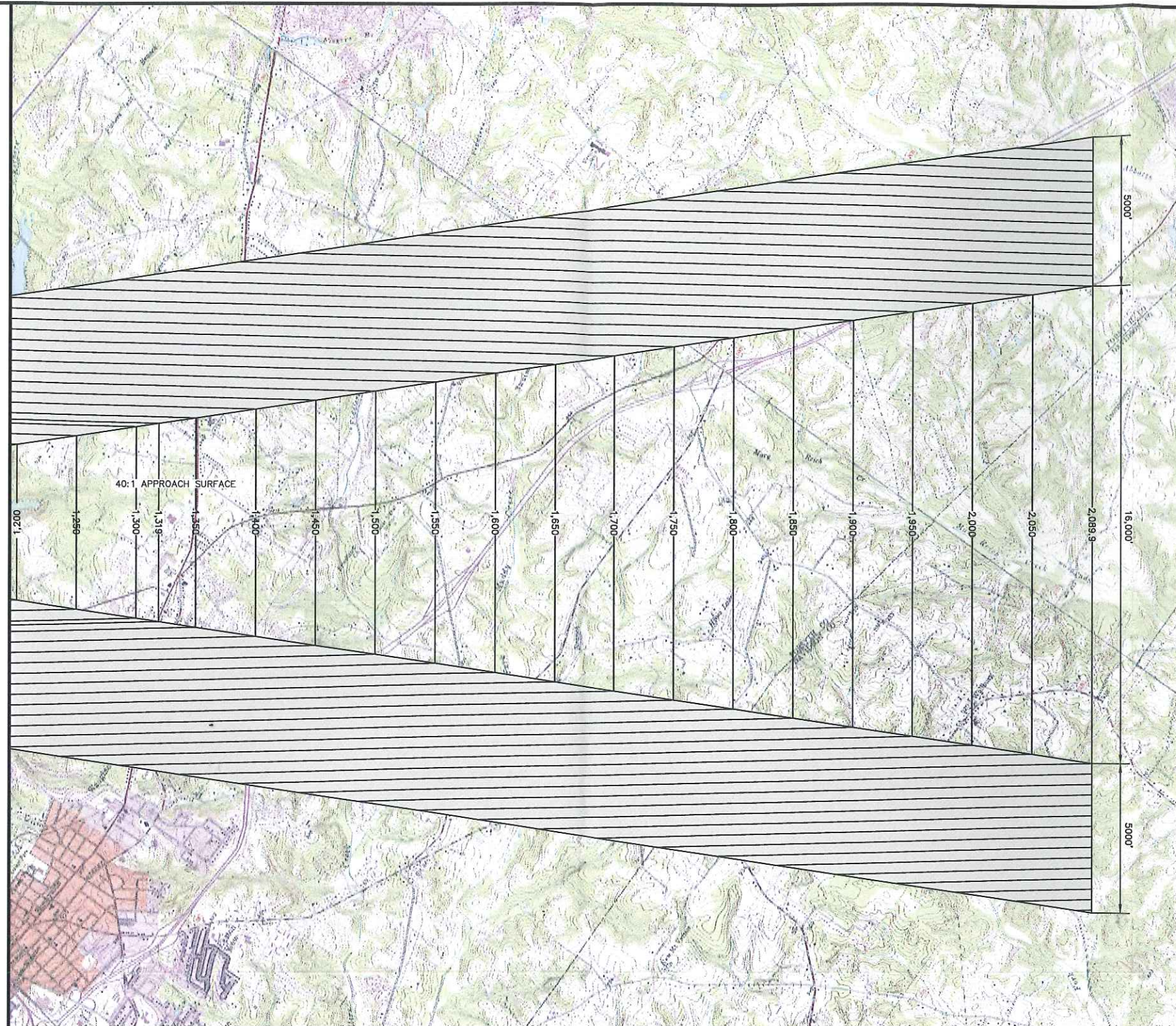
SHEET TITLE

AIRPORT AIRSPACE DRAWING
RUNWAY 15-33
PROFILE
(SHEET 3 OF 3)

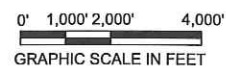
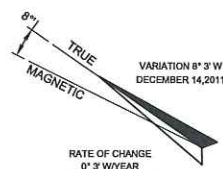
PREPARED BY:

JOB NO.:	2009.130.01
DRAWN:	WLJ
DESIGN:	MAD
CHECKED:	MAD
DATE:	MAY 2012
SCALE:	

MATCHLINE SHEET 6



PLAN VIEW RUNWAY 15-33



Plotted By: wjones
 P:\2009\2009.130.01 Mr
 Update\ALP-Drawings\05_06_07_08_SRA_ALP.dwg May15,2012 - 9:06am

REVISIONS	
DATE	DESCRIPTION

SPONSOR

AIRPORT COMMISSION OF FORSYTH COUNTY

SMITH REYNOLDS AIRPORT

PROJECT

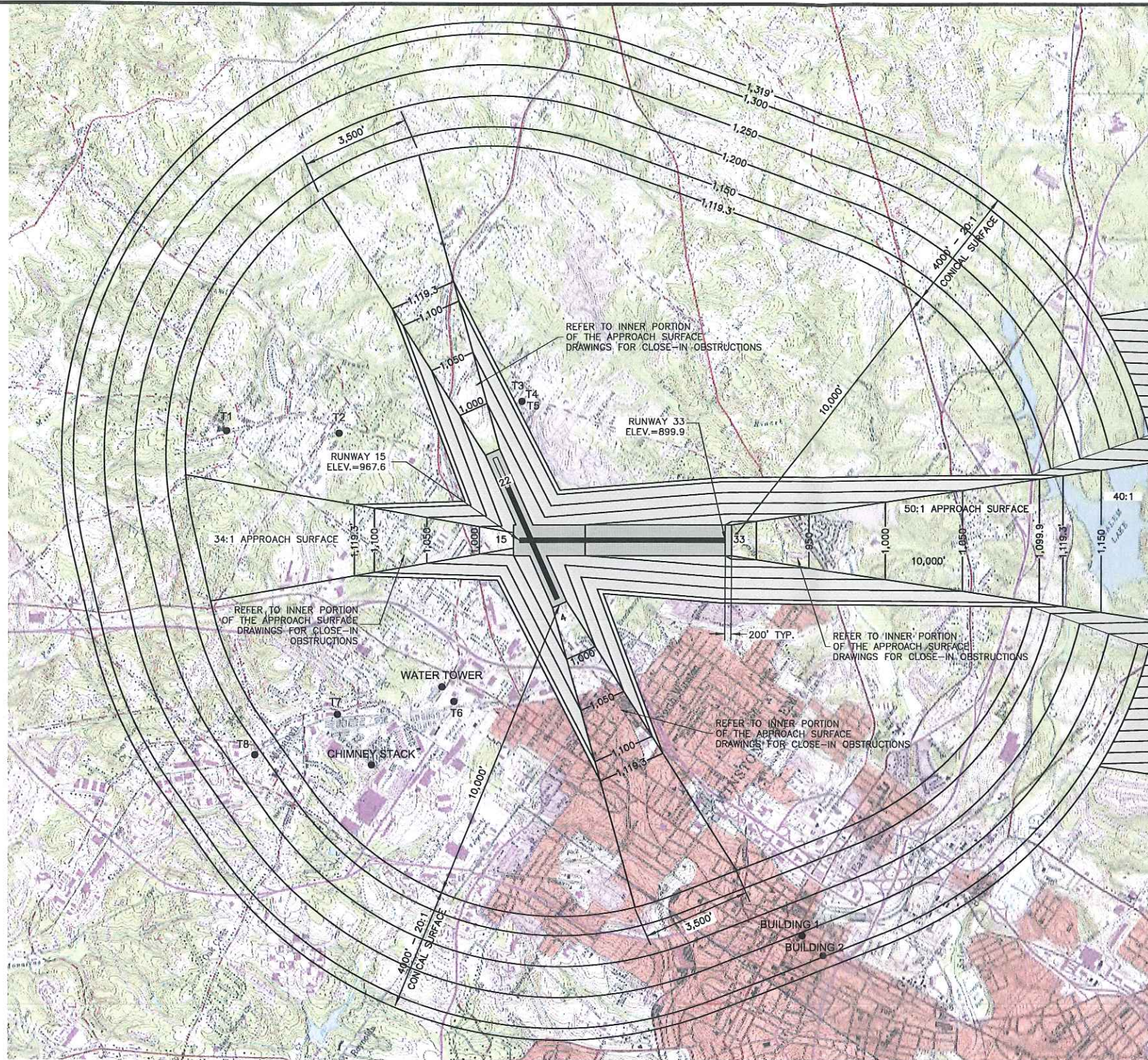
AIRPORT MASTER PLAN UPDATE
SMITH REYNOLDS AIRPORT
WINSTON SALEM, NORTH CAROLINA

SHEET TITLE

AIRPORT AIRSPACE DRAWING
RUNWAY 15-33
PLAN
(SHEET 2 OF 3)

PREPARED BY:

JOB NO.: 2009.130.01
 DRAWN: WLJ
 DESIGN: MAD
 CHECKED: MAD
 DATE: MAY 2012
 SCALE:
 SHEET **7** OF **17**



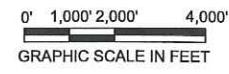
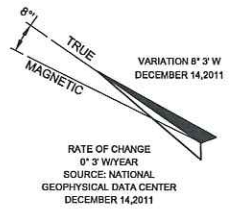
MATCHLINE SHEET 7

PLAN VIEW RUNWAY 15-33

OBSTRUCTION DATA TABLE

ITEM	COUNTY	TYPE	ELEVATION (IN FEET)	AGL (IN FEET)	LIGHTING
T1	FORSYTH	TOWER	1,156.60	160.89	NONE
T2	FORSYTH	TOWER	1,141.08	152.21	NONE
T3	FORSYTH	TOWER	1,135.24	155.93	NONE
T4	FORSYTH	TOWER	1,133.31	153.64	YES
T5	FORSYTH	TOWER	1,132.97	153.31	YES
T6	FORSYTH	TOWER	1,136.00	0	NONE
T7	FORSYTH	TOWER	1,158.26	166.78	NONE
T8	FORSYTH	TOWER	1,160.82	199.95	NONE
BUILDING 1	FORSYTH	BUILDING	1,373.51	439.02	NONE
BUILDING 2	FORSYTH	BUILDING	1,380.68	475.63	NONE
CHIMNEY STACK	FORSYTH	STACK	1,144.60	0	NONE
WATER TOWER	FORSYTH	TOWER	1,143.11	0	NONE

- NOTES:
- SEE SHEET 8 OF 17 FOR PROFILE VIEW RUNWAY 15-33.
 - OBSTRUCTIONS SHOWN ABOVE PENETRATE THE FAR PART 77 SURFACE OBTAINED FROM THE DATA PROVIDED FROM DIGITAL OBSTACLE FILE (DOF) DATED 2009.



Plotted By: wjones
 P:\2009\2009_130.01
 Upscote\AUP-Drawings\05_06_07_08_SRA_AUP.dwg May 15, 2012 - 8:50am

REVISIONS	
DATE	DESCRIPTION

SPONSOR

AIRPORT COMMISSION OF FORSYTH COUNTY

SMITH REYNOLDS AIRPORT

PROJECT

AIRPORT MASTER PLAN UPDATE
SMITH REYNOLDS AIRPORT
WINSTON SALEM, NORTH CAROLINA

SHEET TITLE

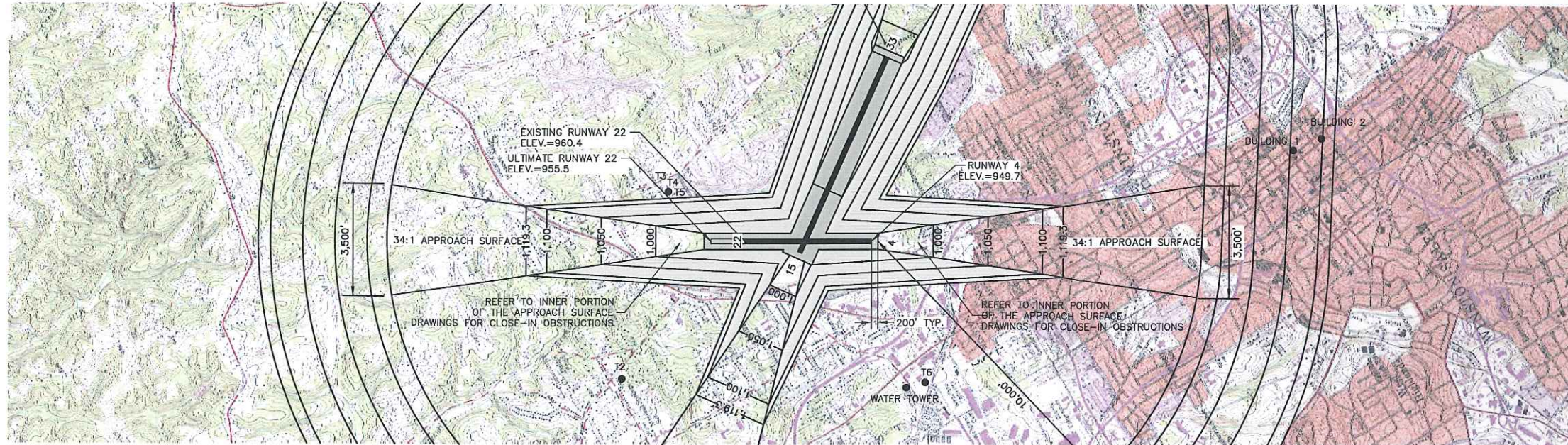
AIRPORT AIRSPACE DRAWING
RUNWAY 15-33
PLAN
(SHEET 1 OF 3)

PREPARED BY:

JOB NO.: 2009.130.01
 DRAWN: WLJ
 DESIGN: MAD
 CHECKED: MAD
 DATE: MAY 2012
 SCALE: _____

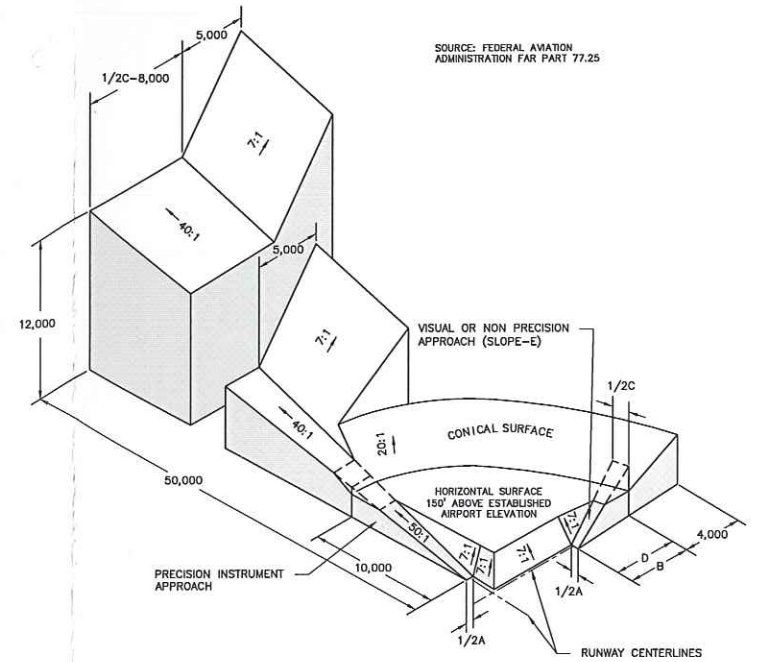
SHEET **6** OF **17**

PRIMARY SURFACE
 TRANSITIONAL ZONE (7:1)



PLAN VIEW RUNWAY 4-22

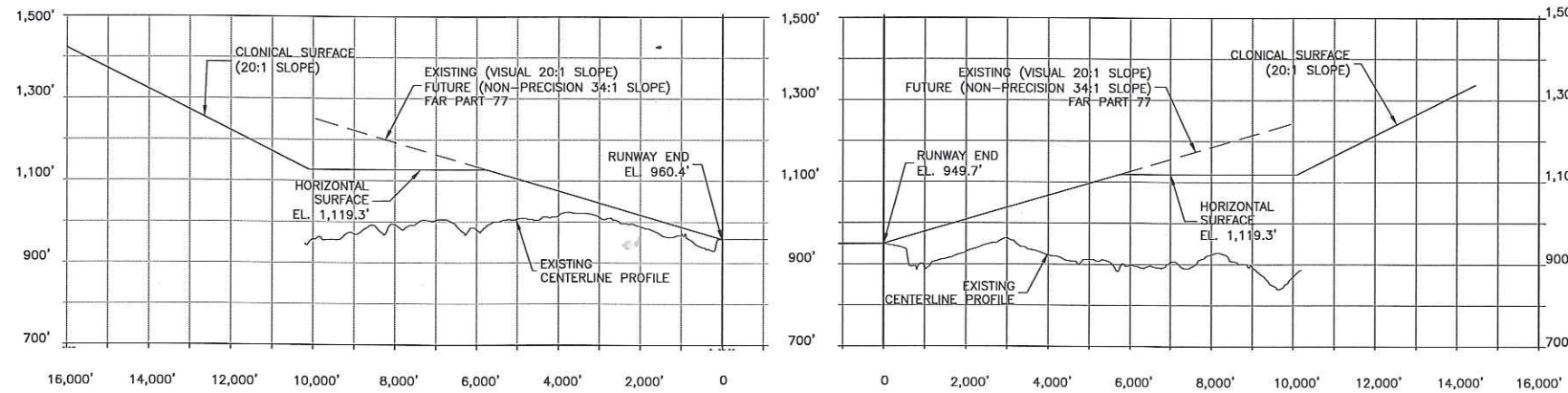
0' 1,000' 2,000' 4,000'
GRAPHIC SCALE IN FEET



DIM	ITEM	DIMENSIONAL STANDARDS (FEET)					
		VISUAL RUNWAY		NON-PRECISION INSTRUMENT RUNWAY		PRECISION INSTRUMENT RUNWAY	
		A	B	A	B		
A	WIDTH OF PRIMARY SURFACE AND APPROACH SURFACE WIDTH AT INNER END	250	250	500	500	1,000	1,000
B	RADIUS OF HORIZONTAL SURFACE	5,000	5,000	5,000	10,000	10,000	10,000
C	APPROACH SURFACE WIDTH AT END	1,250	1,500	2,000	3,500	4,000	16,000
D	APPROACH SURFACE LENGTH	5,000	5,000	5,000	10,000	10,000	*
E	APPROACH SLOPE	20:1	20:1	20:1	34:1	34:1	*

- A - UTILITY RUNWAYS
- B - RUNWAYS LARGER THAN UTILITY
- C - VISIBILITY MINIMUMS GREATER THAN 3/4 MILE
- D - VISIBILITY MINIMUMS AS LOW AS 3/4 MILE
- * - PRECISION INSTRUMENT APPROACH SLOPE IS 50:1 FOR INNER 10,000 FEET AND 40:1 FOR ADDITIONAL 40,000 FEET.

**ISOMETRIC VIEW OF AIRPORT
IMAGINARY SURFACES**



RUNWAY 22

RUNWAY 4

PROFILE VIEW RUNWAY 4-22

0' 1,000' 2,000' 4,000'
(HORIZONTAL SCALE)

0' 100' 200' 400'
(VERTICAL SCALE)

NOTES:

- SEE SHEET B OF 17 FOR PROFILE VIEW RUNWAY 15-33.
- OBSTRUCTIONS SHOWN ABOVE PENETRATE THE FAR PART 77 SURFACE OBTAINED FROM THE DATA PROVIDED FROM DIGITAL OBSTACLE FILE (DOF) DATED 2009.

OBSTRUCTION DATA TABLE					
ITEM	COUNTY	TYPE	ELEVATION (IN FEET)	AGL (IN FEET)	LIGHTING
T1	FORSYTH	TOWER	1,156.60	160.89	NONE
T2	FORSYTH	TOWER	1,141.08	152.21	NONE
T3	FORSYTH	TOWER	1,135.24	155.93	NONE
T4	FORSYTH	TOWER	1,133.31	153.64	YES
T5	FORSYTH	TOWER	1,132.97	153.31	YES
T6	FORSYTH	TOWER	1,136.00	0	NONE
T7	FORSYTH	TOWER	1,158.26	166.78	NONE
T8	FORSYTH	TOWER	1,160.82	199.95	NONE
BUILDING 1	FORSYTH	BUILDING	1,373.51	439.02	NONE
BUILDING 2	FORSYTH	BUILDING	1,380.68	475.63	NONE
CHIMNEY STACK	FORSYTH	STACK	1,144.60	0	NONE
WATER TOWER	FORSYTH	TOWER	1,143.11	0	NONE

Plotted By: wjones
 P:\2009\2009130.01
 Update\ALP-Drawings\05_06_07_08_SRA_ALP.dwg May 15, 2012 - 8:19am
 VARIATION 8' 3" W
 DECEMBER 14, 2011
 RATE OF CHANGE
 0' 2" W/YEAR
 SOURCE: NATIONAL
 GEOPHYSICAL DATA CENTER
 DECEMBER 14, 2011

REVISIONS	
DATE	DESCRIPTION

SPONSOR
AIRPORT COMMISSION OF FORSYTH COUNTY
SMITH REYNOLDS AIRPORT

PROJECT
**AIRPORT MASTER PLAN UPDATE
 SMITH REYNOLDS AIRPORT
 WINSTON SALEM, NORTH CAROLINA**

SHEET TITLE
**AIRPORT AIRSPACE DRAWING
 RUNWAY 4-22
 PLAN AND PROFILE**

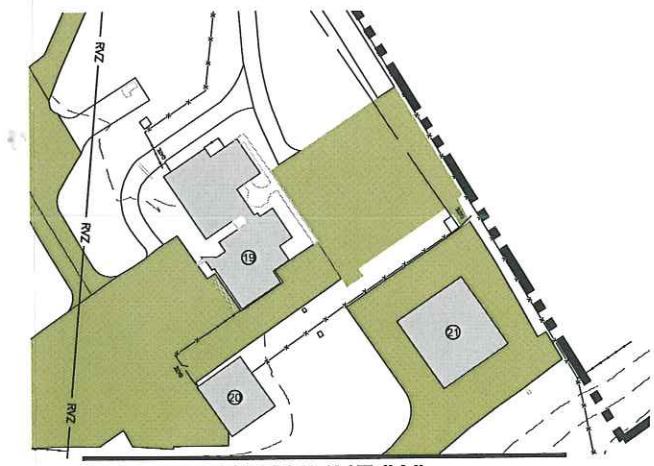
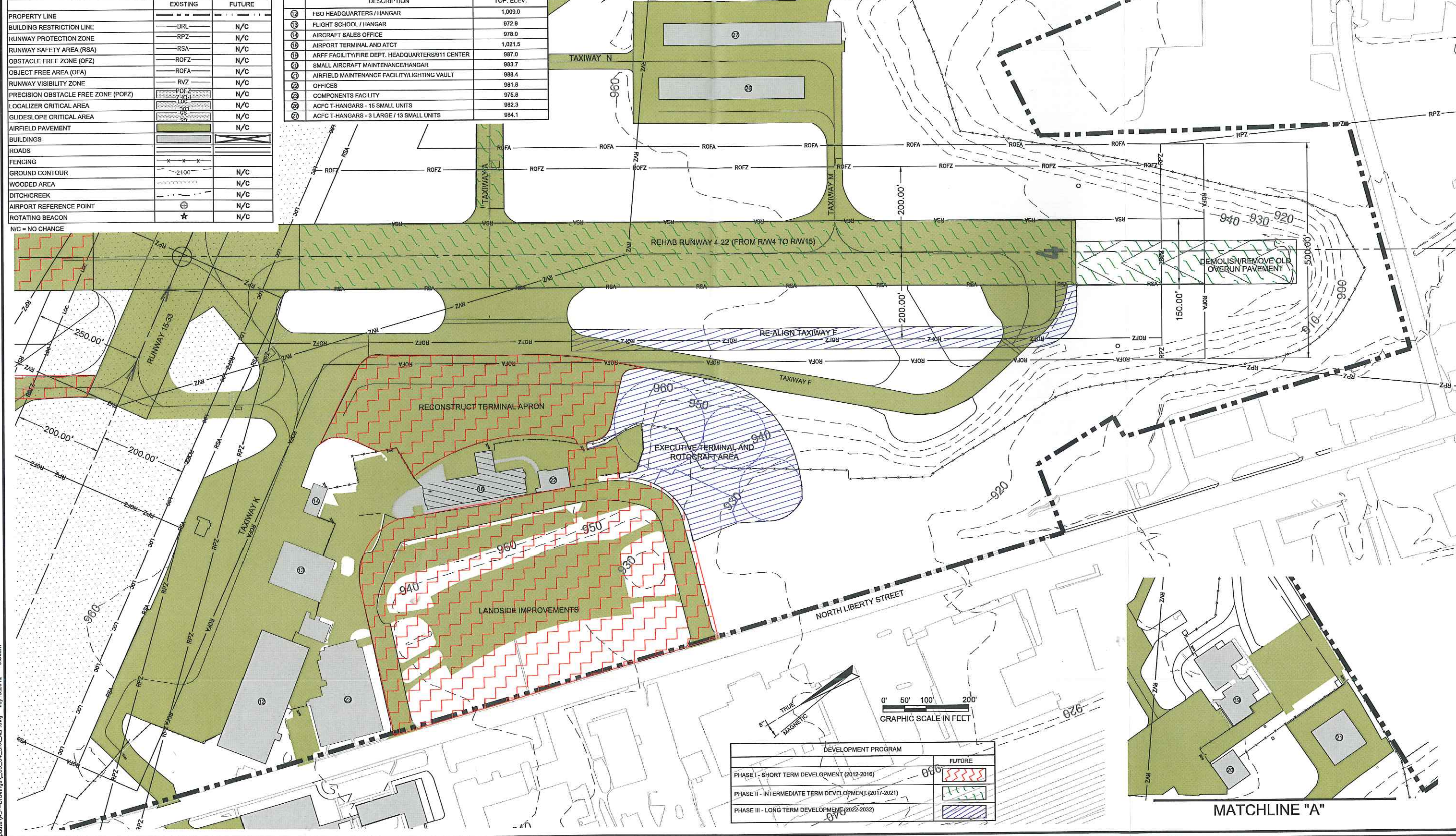
PREPARED BY:
AVCON / **LPA TEAM**

JOB NO.: 2009.130.01
 DRAWN: WLJ
 DESIGN: MAD
 CHECKED: MAD
 DATE: MAY 2012
 SCALE:
 SHEET **5** OF **17**

LEGEND		
	EXISTING	FUTURE
PROPERTY LINE	---	---
BUILDING RESTRICTION LINE	---BRL---	N/C
RUNWAY PROTECTION ZONE	---RPZ---	N/C
RUNWAY SAFETY AREA (RSA)	---RSA---	N/C
OBSTACLE FREE ZONE (OFZ)	---OFZ---	N/C
OBJECT FREE AREA (OFA)	---OFA---	N/C
RUNWAY VISIBILITY ZONE	---RVZ---	N/C
PRECISION OBSTACLE FREE ZONE (POFZ)	---POFZ---	N/C
LOCALIZER CRITICAL AREA	---LCA---	N/C
GLIDESLOPE CRITICAL AREA	---GCA---	N/C
AIRFIELD PAVEMENT	---AP---	N/C
BUILDINGS	---B---	---
ROADS	---R---	---
FENCING	---F---	---
GROUND CONTOUR	---G---	N/C
WOODED AREA	---WA---	N/C
DITCH/CREEK	---D/C---	N/C
AIRPORT REFERENCE POINT	---ARP---	N/C
ROTATING BEACON	---RB---	N/C

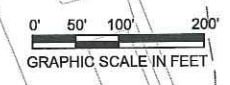
EXISTING BUILDINGS DATA TABLE		
	DESCRIPTION	TOP. ELEV.
12	FBO HEADQUARTERS / HANGAR	1,009.0
13	FLIGHT SCHOOL / HANGAR	972.9
14	AIRCRAFT SALES OFFICE	978.0
15	AIRPORT TERMINAL AND ATCT	1,021.5
16	ARFF FACILITY/FIRE DEPT. HEADQUARTERS/911 CENTER	987.0
17	SMALL AIRCRAFT MAINTENANCE/HANGAR	983.7
18	AIRFIELD MAINTENANCE FACILITY/LIGHTING VAULT	988.4
19	OFFICES	981.8
20	COMPONENTS FACILITY	975.8
21	ACFC T-HANGARS - 15 SMALL UNITS	982.3
22	ACFC T-HANGARS - 3 LARGE / 13 SMALL UNITS	984.1

MATCHLINE "A" THIS SHEET



MATCHLINE "A"

DEVELOPMENT PROGRAM	
	FUTURE
PHASE I - SHORT TERM DEVELOPMENT (2012-2016)	
PHASE II - INTERMEDIATE TERM DEVELOPMENT (2017-2021)	
PHASE III - LONG TERM DEVELOPMENT (2022-2032)	



Plotted By: wjones
 P:\2009\200913001 Master Plan Update\ALP-Drawings\03_04_SRA_ALP.dwg May 15, 2012 8:36am

REVISIONS	
DATE	DESCRIPTION

SPONSOR

AIRPORT COMMISSION OF FORSYTH COUNTY

SMITH REYNOLDS AIRPORT

PROJECT

AIRPORT MASTER PLAN UPDATE
SMITH REYNOLDS AIRPORT
WINSTON SALEM, NORTH CAROLINA

SHEET TITLE

TERMINAL AREA PLAN
(SHEET 2 OF 2)

PREPARED BY:

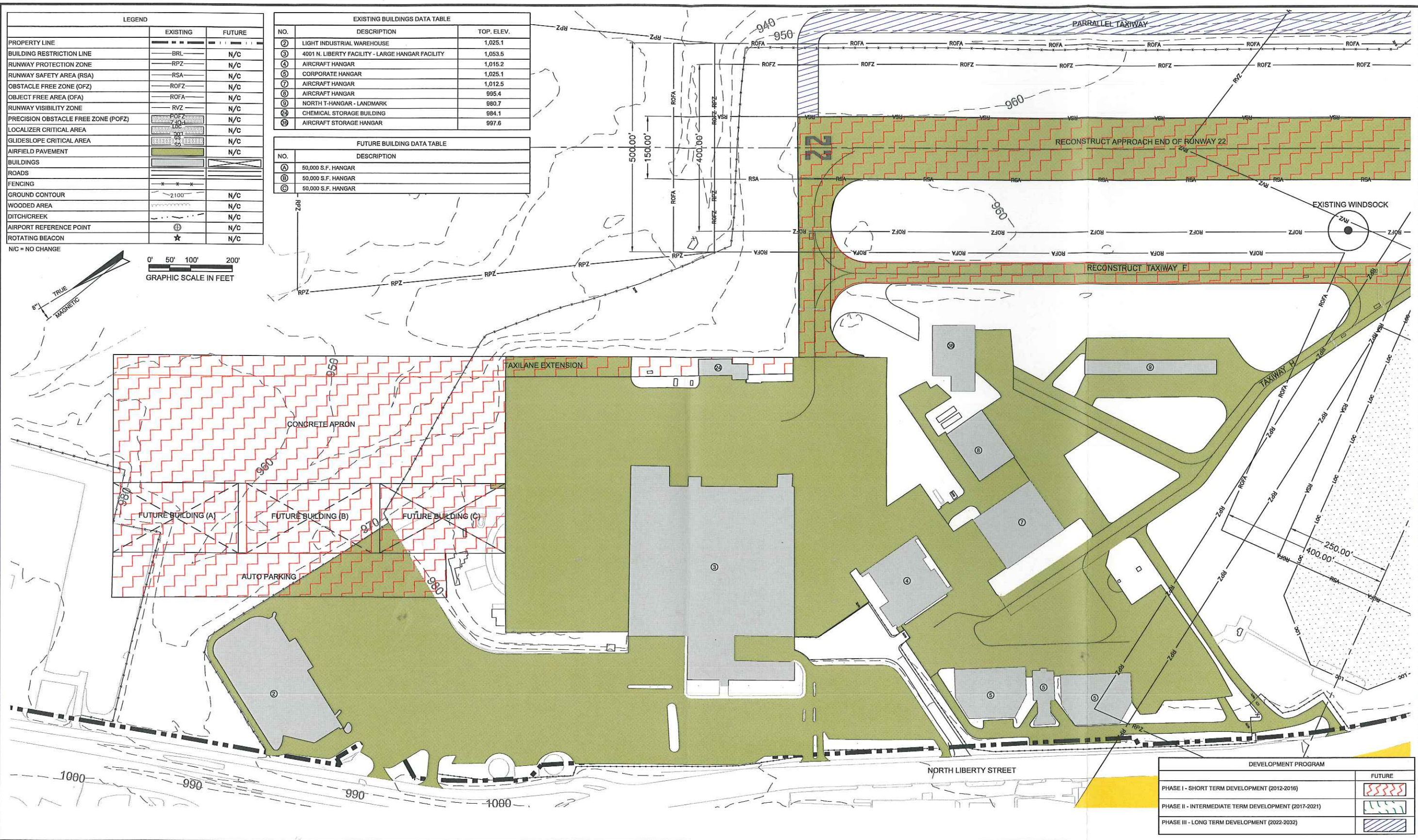
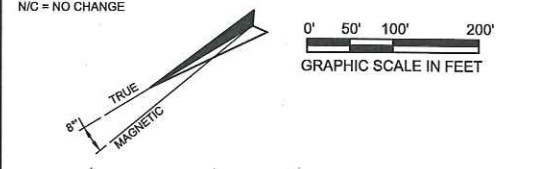
AVCON / **LPA TEAM**

JOB NO.: 2009.130.01
 DRAWN: WLJ
 DESIGN: MAD
 CHECKED: MAD
 DATE: MAY 2012
 SCALE:
 SHEET **4** OF **17**

LEGEND		
	EXISTING	FUTURE
PROPERTY LINE	---	---
BUILDING RESTRICTION LINE	BRL	N/C
RUNWAY PROTECTION ZONE	RPZ	N/C
RUNWAY SAFETY AREA (RSA)	RSA	N/C
OBSTACLE FREE ZONE (OFZ)	ROFZ	N/C
OBJECT FREE AREA (OFA)	ROFA	N/C
RUNWAY VISIBILITY ZONE	RVZ	N/C
PRECISION OBSTACLE FREE ZONE (POFZ)	POFZ	N/C
LOCALIZER CRITICAL AREA	LOCA	N/C
GLIDESLOPE CRITICAL AREA	GLCA	N/C
AIRFIELD PAVEMENT	---	N/C
BUILDINGS	---	---
ROADS	---	---
FENCING	---	---
GROUND CONTOUR	2100	N/C
WOODED AREA	---	N/C
DITCH/CREEK	---	N/C
AIRPORT REFERENCE POINT	⊕	N/C
ROTATING BEACON	★	N/C

EXISTING BUILDINGS DATA TABLE		
NO.	DESCRIPTION	TOP. ELEV.
②	LIGHT INDUSTRIAL WAREHOUSE	1,025.1
③	4001 N. LIBERTY FACILITY - LARGE HANGAR FACILITY	1,053.5
④	AIRCRAFT HANGAR	1,015.2
⑤	CORPORATE HANGAR	1,025.1
⑦	AIRCRAFT HANGAR	1,012.5
⑧	AIRCRAFT HANGAR	995.4
⑨	NORTH T-HANGAR - LANDMARK	980.7
⑫	CHEMICAL STORAGE BUILDING	984.1
⑬	AIRCRAFT STORAGE HANGAR	997.6

FUTURE BUILDING DATA TABLE	
NO.	DESCRIPTION
Ⓐ	50,000 S.F. HANGAR
Ⓑ	50,000 S.F. HANGAR
Ⓒ	50,000 S.F. HANGAR



DEVELOPMENT PROGRAM	
	FUTURE
PHASE I - SHORT TERM DEVELOPMENT (2012-2016)	
PHASE II - INTERMEDIATE TERM DEVELOPMENT (2017-2021)	
PHASE III - LONG TERM DEVELOPMENT (2022-2032)	

Plotted By: wjones
 P:\2009\200913001 Master Plan Update\ALP-Drawings\03_04_SRA_AUP.dwg May 15, 2012 - 9:35am

REVISIONS	
DATE	DESCRIPTION

SPONSOR

AIRPORT COMMISSION OF FORSYTH COUNTY

SMITH REYNOLDS AIRPORT

PROJECT

AIRPORT MASTER PLAN UPDATE
SMITH REYNOLDS AIRPORT
WINSTON SALEM, NORTH CAROLINA

SHEET TITLE

TERMINAL AREA PLAN
(SHEET 1 OF 2)

PREPARED BY:

JOB NO.: 2009.130.01
 DRAWN: WLJ
 DESIGN: MAD
 CHECKED: MAD
 DATE: MAY 2012
 SCALE:

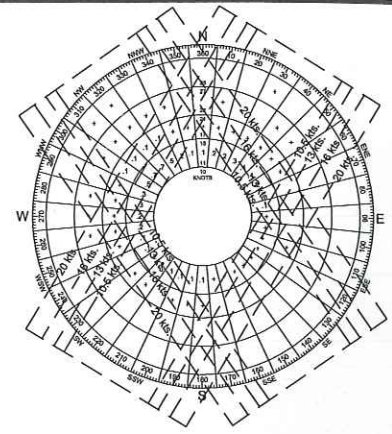
SHEET **3** OF **17**

ABBREVIATIONS		RUNWAY DATA 15-33		RUNWAY DATA 4-22	
ABBREVIATION	DESCRIPTION	EXISTING	FUTURE	EXISTING	FUTURE
ROFA	RUNWAY OBJECT FREE AREA				
TOFA	TAXIWAY OBJECT FREE AREA				
RSA	RUNWAY SAFETY AREA				
RPZ	RUNWAY PROTECTION ZONE				
RVZ	RUNWAY VISIBILITY ZONE				
REIL	RUNWAY END IDENTIFIER LIGHTS				
PAPI	PRECISION APPROACH PATH INDICATOR				
ASOS	AUTOMATED SURFACE OBSERVING SYSTEM				
MIRL	MEDIUM INTENSITY RUNWAY LIGHT				
MITL	MEDIUM INTENSITY TAXIWAY LIGHT				
MALSR	MEDIUM INTENSITY APPROACH LIGHTING SYSTEM				
RAIL	RUNWAY ALIGNMENT INDICATOR LIGHTS				
EMAS	ENGINEERED MATERIAL ARRESTING SYSTEM				
TORA	TAKEOFF RUNWAY AVAILABLE				
TODA	TAKEOFF DISTANCE AVAILABLE				
ASDA	ACCELERATE-STOP DISTANCE AVAILABLE				
LDA	LANDING DISTANCE AVAILABLE				
		RUNWAY LENGTH & WIDTH	6,655' X 150'	NIC	3,938' X 150'
		EFFECTIVE GRADIENT (%)	1.00%	NIC	0.3%
		SURFACE MATERIAL	ASPHALT	NIC	ASPHALT
		PAVEMENT STRENGTH (IN POUNDS)			
		SINGLE WHEEL GEAR	110,000	NIC	40,000
		DUAL WHEEL GEAR	135,000	NIC	55,000
		DOUBLE TANDEM WHEEL GEAR	230,000	NIC	90,000
		RUNWAY LIGHTING	HIRL	NIC	MIRL
		RUNWAY MARKING	PRECISION	NIC	BASIC NON-PRECISION
		% WIND COVERAGE (ALL WEATHER)	10.5 KTS - 97.02% 13 KTS - 98.49%	NIC	10.5 KTS - 93.87% 13 KTS - 95.56%
		VISUAL NAVAIDS	REIL (RW15) PAPI (RW15) MALSR (RW23) PAPI (RW23)	NIC	PAPI (RW22) PAPI (RW4)
		OBJECT FREE AREA	8,655' X 800'	NIC	4,538' X 500'
		RUNWAY SAFETY AREA	8,655' X 500'	NIC	4,538' X 150'
		APPROACH CAT/INSTRUMENT TYPE	INSTRUMENT	NIC	VISUAL NON-PRECISION
		APPROACH TYPE	RW15 (NON-PRECISION) RW23 (PRECISION)	NIC	VISUAL NON-PRECISION
		APPROACH SLOPE	RW15 (0.11) RW23 (0.1)	NIC	RW4 (0.11) RW22 (0.1) RW4 (0.11) RW22 (0.1)
		AIRPORT REFERENCE CODE	C-III	NIC	B-II
		DESIGN AIRCRAFT	BOEING 737-500	NIC	KINGAIR C90

NIC = NO CHANGE

RUNWAY END LATITUDE AND LONGITUDE (NAD83)		
	EXISTING	FUTURE
RUNWAY END 15 COORDINATES	LAT. 36° 08' 19.70" N LONG. 80° 13' 34.65" W	NIC
RUNWAY END 15 COORDINATES (DISPLACED THRESHOLD)	LAT. 36° 08' 14.97" N LONG. 80° 13' 30.51" W	NIC
RUNWAY END 33 COORDINATES	LAT. 36° 07' 26.04" N LONG. 80° 12' 47.69" W	NIC
RUNWAY END 4 COORDINATES	LAT. 36° 07' 59.01" N LONG. 80° 13' 44.91" W	NIC
RUNWAY END 22 COORDINATES	LAT. 36° 08' 32.48" N LONG. 80° 13' 20.38" W	NIC

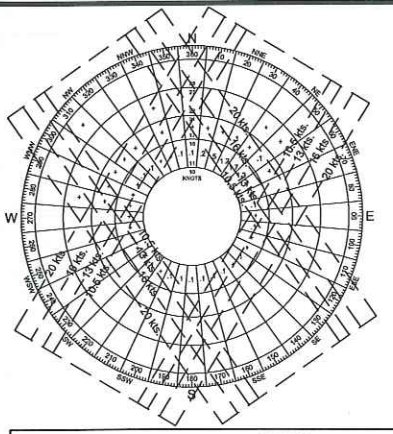
NIC = NO CHANGE



All Weather Windrose			
Crosswind Component (kts)	Wind Coverage %		
	Runway 4-22	Runway 15-33	Combined
10.5	98.15%	97.02%	99.53%
13	97.82%	96.49%	99.53%
16	99.49%	99.81%	99.99%
20	99.90%	99.91%	100.00%

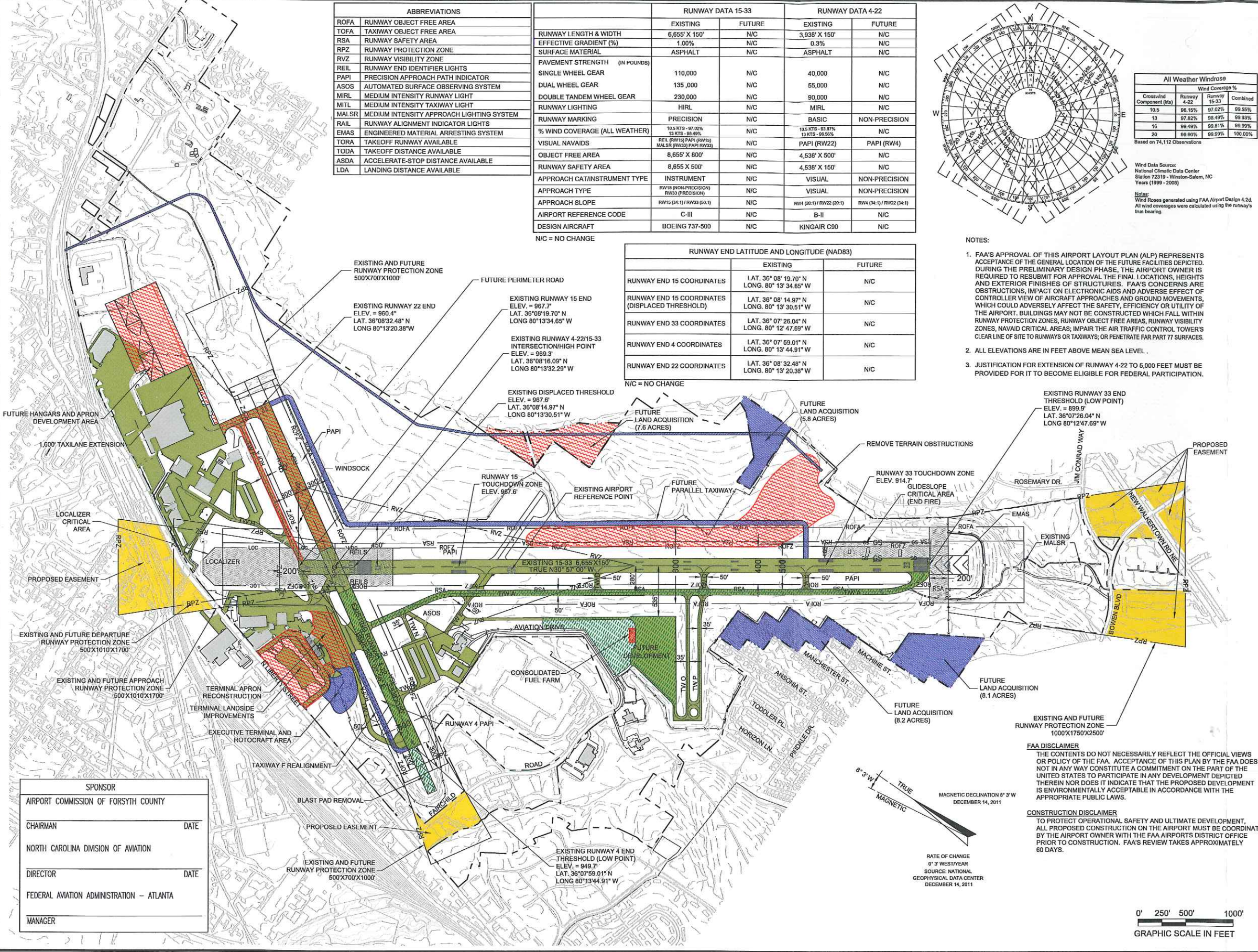
Wind Data Source: National Climatic Data Center Station 72319 - Winston-Salem, NC Years (1999 - 2009)

Notes: Wind Roses generated using FAA Airport Design 4.2d. All wind coverages were calculated using the runway's true bearing.



IFR Windrose			
Crosswind Component (kts)	Wind Coverage %		
	Runway 4-22	Runway 15-33	Combined
10.5	99.10%	93.87%	99.79%
13	99.54%	95.56%	99.97%
16	99.85%	99.51%	99.99%
20	99.85%	99.91%	100.00%

Based on 7,270 Observations



NOTES:

- FAA'S APPROVAL OF THIS AIRPORT LAYOUT PLAN (ALP) REPRESENTS ACCEPTANCE OF THE GENERAL LOCATION OF THE FACILITIES DEPICTED. DURING THE PRELIMINARY DESIGN PHASE, THE AIRPORT OWNER IS REQUIRED TO RESUBMIT FOR APPROVAL THE FINAL LOCATIONS, HEIGHTS AND EXTERIOR FINISHES OF STRUCTURES. FAA'S CONCERNS ARE OBSTRUCTIONS, IMPACT ON ELECTRONIC AIDS AND ADVERSE EFFECT OF CONTROLLER VIEW OF AIRCRAFT APPROACHES AND GROUND MOVEMENTS, WHICH COULD ADVERSELY AFFECT THE SAFETY, EFFICIENCY OR UTILITY OF THE AIRPORT. BUILDINGS MAY NOT BE CONSTRUCTED WHICH FALL WITHIN RUNWAY PROTECTION ZONES, RUNWAY OBJECT FREE AREAS, RUNWAY VISIBILITY ZONES, NAVAID CRITICAL AREAS; IMPAIR THE AIR TRAFFIC CONTROL TOWER'S CLEAR LINE OF SIGHT TO RUNWAYS OR TAXIWAYS; OR PENETRATE FAR PART 77 SURFACES.
- ALL ELEVATIONS ARE IN FEET ABOVE MEAN SEA LEVEL.
- JUSTIFICATION FOR EXTENSION OF RUNWAY 4-22 TO 5,000 FEET MUST BE PROVIDED FOR IT TO BECOME ELIGIBLE FOR FEDERAL PARTICIPATION.

LEGEND

	EXISTING	FUTURE
PROPERTY LINE	---	---
BUILDING RESTRICTION LINE	---	N/C
RUNWAY PROTECTION ZONE	RPZ	N/C
RUNWAY SAFETY AREA (RSA)	RSA	N/C
OBSTACLE FREE ZONE (OFZ)	ROFZ	N/C
OBJECT FREE AREA (OFA)	ROFA	N/C
RUNWAY VISIBILITY ZONE	RVZ	N/C
PRECISION OBSTACLE FREE ZONE (POFZ)	POFZ	N/C
LOCALIZER CRITICAL AREA	LCA	N/C
GLIDESLOPE CRITICAL AREA	GCA	N/C
AIRFIELD PAVEMENT	PAV	N/C
BUILDINGS	BUILDING	N/C
PROPOSED EASEMENT	EASEMENT	N/C
ROADS	ROAD	N/C
FENCING	FENCING	N/C
GROUND CONTOUR	CONTOUR	N/C
WOODED AREA	WOODED	N/C
DITCH/CREEK	DITCH	N/C
AIRPORT REFERENCE POINT	ARP	N/C
ROTATING BEACON	BEACON	N/C

DECLARED DISTANCES							
DISTANCES	EXISTING				FUTURE		
	RW 4	RW 22	RW 15	RW 33	RW 4	RW 22	RW 15
TORA	3,938	3,938	6,655	6,655	NIC	NIC	NIC
TODA	3,938	3,938	6,655	6,655	NIC	NIC	NIC
ASDA	3,938	3,938	6,655	6,655	NIC	NIC	NIC
LDA	3,938	3,938	6,069	6,655	NIC	NIC	NIC

DEVELOPMENT PROGRAM	
PHASE I - SHORT TERM DEVELOPMENT (2012-2016)	FUTURE
PHASE II - INTERMEDIATE TERM DEVELOPMENT (2017-2021)	FUTURE
PHASE III - LONG TERM DEVELOPMENT (2022-2032)	FUTURE

GENERAL AIRPORT DATA		
	EXISTING	FUTURE
AIRPORT REFERENCE CODE	C-III	NIC
ESTABLISHED AIRPORT ELEV.	969.3'	NIC
MEAN DAILY MAX. TEMPERATURE	89° F	NIC
AIRPORT REFERENCE POINT (ARP) NAD83	LAT. 36° 08' 19.70" N LONG. 80° 13' 34.65" W	NIC
TAXIWAY LIGHTING	MITL	NIC
TAXIWAY MARKING	BASIC	NIC
AIRPORT NAVAIDS	ILS, GPS	NIC
RUNWAY 15 END ELEVATION	967.7'	NIC
RUNWAY 33 END ELEVATION	899.9'	NIC
RUNWAY 4 END ELEVATION	949.7'	NIC
RUNWAY 22 END ELEVATION	960.4'	NIC

TAXIWAY DATA TABLE		
	EXISTING	FUTURE
TAXIWAY WIDTH	35/50'	NIC
TAXIWAY/RUNWAY SEPARATION	280'	NIC
RUNWAY 15-33	280'	NIC
RUNWAY 4-22	240'	NIC
TAXIWAY/APRON PARKING	535'	NIC
RUNWAY 15-33	300'	NIC
RUNWAY 4-22	300'	NIC

NIC = NO CHANGE

SPONSOR	
AIRPORT COMMISSION OF FORSYTH COUNTY	
CHAIRMAN	DATE
NORTH CAROLINA DIVISION OF AVIATION	
DIRECTOR	DATE
FEDERAL AVIATION ADMINISTRATION - ATLANTA	
MANAGER	

Update: ALP - Drawings - 02_SRA_ALP.dwg May 15, 2012 - 7:59am
 Plotted By: wjones
 P:\2009\2009.1.30.01.v

REVISIONS	
NO.	DESCRIPTION

SPONSOR

AIRPORT COMMISSION OF FORSYTH COUNTY

SMITH REYNOLDS AIRPORT

PROJECT

AIRPORT MASTER PLAN UPDATE

SMITH REYNOLDS AIRPORT

WINSTON SALEM, NORTH CAROLINA

SHEET TITLE

AIRPORT LAYOUT PLAN

PREPARED BY:

AVCON / **LPA TEAM**

JOB NO.: 2009.130.01
 DRAWN: WLJ
 DESIGN: MAD
 CHECKED: MAD
 DATE: MAY 2012
 SCALE:

SHEET **2** OF **17**